



# ANTHOS LINEA CLINICAL CABINETRY CATALOG

---



# TABLE OF CONTENTS

<u>Anthos Linea Rear Treatment Cabinetry</u>	<u>3 - 29</u>
<u>Anthos Linea Side Treatment Cabinetry</u>	<u>30 - 108</u>
<u>Anthos Linea Center Island Cabinetry</u>	<u>109 - 113</u>
<u>Anthos Linea Sterilization Cabinetry</u>	<u>114 - 119</u>
<u>Finish Options</u>	<u>120 - 121</u>



# ANTHOS LINEA REAR TREATMENT CONSOLE

Vendor Item #: ALRTC B00-H00-U12

PDCP SAP #: 510080698

Description: Rear TX console, Upper  
Cabinet Only

MSRP: \$2,500

Console Dimensions:

Width: 41.6"

Height: 23.6"

Depth: 17.3"

For all dimensions please see the respective installation guide

Standard Features Includes:

- ☒ Installed free-standing or flush to wall
- ☒ Soft close concealed hinge doors
- ☒ Premium laminate fronts and doors



# ANTHOS LINEA REAR TREATMENT CONSOLE

Vendor Item #: ALRTC B11-H11-U11

PDCP SAP #: 101707787

Description: Rear TX console, All Drawers to Front, Hutch

MSRP: \$8,920

Console Dimensions:

Width: 42.5"

Height: 75.5"

Depth: 20.2"

For all dimensions please see the respective installation guide

Standard Features Includes:

- ☒ Structural steel powder coated base with built in levelers
- ☒ Installed free-standing or flush to wall
- ☒ Soft close drawers
- ☒ Soft close concealed hinge doors
- ☒ Premium laminate fronts and doors
- ☒ Designer solid surface work surface
- ☒ Fully chaised for future equipment integration
- ☒ Hospital grade duplex
- ☒ Task lighting



# ANTHOS LINEA REAR TREATMENT CONSOLE

Vendor Item #: ALRTC B12-H00-U00

PDCP SAP #: 510080537

Description: Rear TX console, All Drawers to Front

MSRP: \$8,920

Console Dimensions:

Width: 42.5"

Height: 30"

Depth: 20.2"

For all dimensions please see the respective installation guide

Standard Features Includes:

- ☒ Structural steel powder coated base with built in levelers
- ☒ Installed free-standing or flush to wall
- ☒ Soft close drawers
- ☒ Soft close concealed hinge door
- ☒ Premium laminate fronts and doors
- ☒ Designer solid surface work surface



# ANTHOS LINEA REAR TREATMENT CONSOLE

Vendor Item #: ALRTC B12-H00-U12

PDCP SAP #: 101707788

Description: Rear TX Console, All Drawers to Front,  
No Hutch

MSRP: \$7,870

Console Dimensions:

Width: 42.5"

Height: 75.5"

Depth: 20.2"

For all dimensions please see the respective installation guide

Standard Features Includes:

- ☒ Structural steel powder coated base with built in levelers
- ☒ Installed flush to wall
- ☒ Soft close drawers
- ☒ Soft close concealed hinge doors
- ☒ Premium laminate fronts and doors
- ☒ Designer solid surface work surface



# ANTHOS LINEA REAR TREATMENT CONSOLE

Vendor Item #: ALRTC B13-H00-U00

PDCP SAP #: 510080684

Description: Rear TX console, All Drawers to Side

MSRP: \$6,370

Console Dimensions:

Width: 42.5"

Height: 30"

Depth: 20.2"

For all dimensions please see the respective installation guide

Standard Features Includes:

- ☒ Structural steel powder coated base with built in levelers
- ☒ Installed free-standing or flush to wall
- ☒ Soft close drawers
- ☒ Soft close concealed hinge door
- ☒ Premium laminate fronts and doors
- ☒ Designer solid surface work surface



# ANTHOS LINEA REAR TREATMENT CONSOLE

Vendor Item #: ALRTC B13-H11-U11

PDCP SAP #: 510080726

Description: Rear TX Console, Left Drawer to Side  
Right Drawers to Side, Hutch

MSRP: \$8,920

Console Dimensions:

Width: 42.5"

Height: 75.5"

Depth: 20.2"

For all dimensions please see the respective installation guide

Standard Features Includes:

- ❑ Structural steel powder coated base with built in levelers
- ❑ Installed free-standing or flush to wall
- ❑ Soft close drawers
- ❑ Soft close concealed hinge doors
- ❑ Premium laminate fronts and doors
- ❑ Designer solid surface work surface
- ❑ Fully chaised for future equipment integration
- ❑ Hospital grade duplex
- ❑ Task lighting



# ANTHOS LINEA REAR TREATMENT CONSOLE

Vendor Item #: ALRTC B13-H00-U12

PDCP SAP #: 510080705

Description: Rear TX console, All Drawers to Side, No Hutch

MSRP: 7,870

Console Dimensions:

Width: 42.5"

Height: 75.5"

Depth: 20.2"

For all dimensions please see the respective installation guide

Standard Features Includes:

- ☒ Structural steel powder coated base with built in levelers
- ☒ Installed flush to wall
- ☒ Soft close drawers
- ☒ Soft close concealed hinge doors
- ☒ Premium laminate fronts and doors
- ☒ Designer solid surface work surface



# ANTHOS LINEA REAR TREATMENT CONSOLE

Vendor Item #: ALRTC B14-H11-U11

PDCP SAP #: 101707789

Description: Rear TX Console, Left Drawer to Front,  
Right Drawers to Side, Hutch

MSRP: \$8,920

Console Dimensions:

Width: 42.5"

Height: 75.5"

Depth: 20.2"

For all dimensions please see the respective installation guide

Standard Features Includes:

- ❑ Structural steel powder coated base with built in levelers
- ❑ Installed free-standing or flush to wall
- ❑ Soft close drawers
- ❑ Soft close concealed hinge doors
- ❑ Premium laminate fronts and doors
- ❑ Designer solid surface work surface
- ❑ Fully chaised for future equipment integration
- ❑ Hospital grade duplex
- ❑ Task lighting



# ANTHOS LINEA REAR TREATMENT CONSOLE

Vendor Item #: ALRTC B15-H00-U00

PDCP SAP #: 510080866

Description: Rear TX console, Left Drawers  
Front, Right Drawers Side

MSRP: \$6,370

Console Dimensions:

Width: 42.5"

Height: 75.5"

Depth: 20.2"

For all dimensions please see the respective installation guide

Standard Features Includes:

- ☒ Structural steel powder coated base with built in levelers
- ☒ Installed free-standing or flush to wall
- ☒ Soft close drawers
- ☒ Soft close concealed hinge door
- ☒ Premium laminate fronts and doors
- ☒ Designer solid surface work surface



# ANTHOS LINEA REAR TREATMENT CONSOLE

Vendor Item #: ALRTC B15-H00-U12

PDCP SAP #: 101707790

Description: Rear TX Console, Left Drawers to Front,  
Right Drawers to Side, No Hutch

MSRP: \$7,870

Console Dimensions:

Width: 42.5"

Height: 75.5"

Depth: 20.2"

For all dimensions please see the respective installation guide

Standard Features Includes:

- ✘ Structural steel powder coated base with built in levelers
- ✘ Installed flush to wall
- ✘ Soft close drawers
- ✘ Soft close concealed hinge doors
- ✘ Premium laminate fronts and doors
- ✘ Designer solid surface work surface



# ANTHOS LINEA REAR TREATMENT CONSOLE

Vendor Item #: ALRTC B17-H11-U11

PDCP SAP #: 101707791

Description: Rear TX Console, Left Drawer to Side,  
Right Drawer to Front, Hutch

MSRP: \$8,920

Console Dimensions:

Width: 42.5"

Height: 75.5"

Depth: 20.2"

For all dimensions please see the respective installation guide

Standard Features Includes:

- ✘ Structural steel powder coated base with built in levelers
- ✘ Installed free-standing or flush to wall
- ✘ Soft close drawers
- ✘ Soft close concealed hinge doors
- ✘ Premium laminate fronts and doors
- ✘ Designer solid surface work surface
- ✘ Fully chaised for future equipment integration
- ✘ Hospital grade duplex
- ✘ Task lighting



# ANTHOS LINEA REAR TREATMENT CONSOLE

Vendor Item #: ALRTC B18-H00-U00

PDCP SAP #: 510080600

Description: Rear TX console, Left Drawers  
Side, Right Drawers Front

MSRP: \$6,370

Console Dimensions:

Width: 42.5"

Height: 30"

Depth: 20.2"

For all dimensions please see the respective installation guide

Standard Features Includes:

- ☒ Structural steel powder coated base with built in levelers
- ☒ Installed flush to wall
- ☒ Soft close drawers
- ☒ Soft close concealed hinge doors
- ☒ Premium laminate fronts and doors
- ☒ Designer solid surface work surface



# ANTHOS LINEA REAR TREATMENT CONSOLE

Vendor Item #: ALRTC B18-H00-U12

PDCP SAP #: 101707792

Description: Rear TX Console, Left Drawer to Side,  
Right Drawers to Front, No Hutch

MSRP: \$7,870

Console Dimensions:

Width: 42.5"

Height: 75.5"

Depth: 20.2"

For all dimensions please see the respective installation guide

Standard Features Includes:

- ✘ Structural steel powder coated base with built in levelers
- ✘ Installed flush to wall
- ✘ Soft close drawers
- ✘ Soft close concealed hinge doors
- ✘ Premium laminate fronts and doors
- ✘ Designer solid surface work surface



REAR CONSOLE - B14-H11-U11  
configuration as shown)



- Multiple Configurations by design for matching productivity to your workflow
  - Fully chaised for future equipment integration
  - CNC Precision Manufacturing
  - Installed free-standing or flush to wall
- 
- Pattern matched doors/drawer faces
  - Slide out Work Surface
  - Task lighting
  - 14 Ga. structural steel toe kicks powder coated base with built in levelers
  - Thermally Formed Laminate (TFL) construction
  - Designer solid surface worksurface Decorative
  - Accent Panels
  - Soft Close Doors & Drawers
  - Hospital grade duplex
  - Dimensions as shown  
42.5"W x 75.5"H x 20.2"D



Available Options

**B14-H11-U11-1-3-109-112-120**

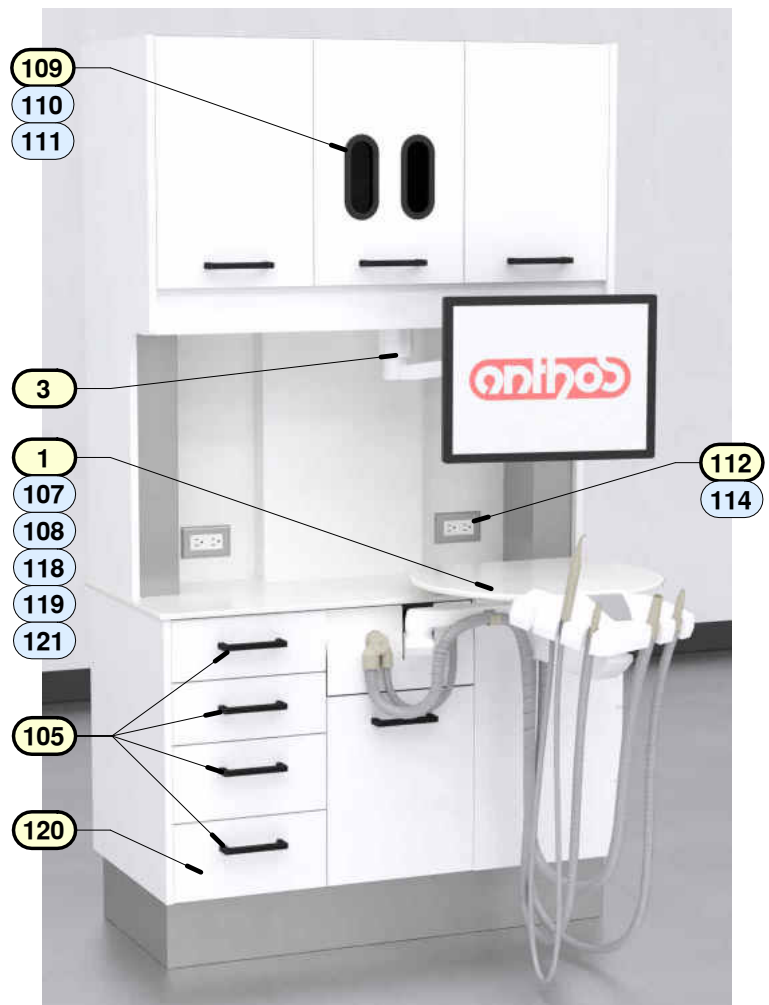
(example **optional** configuration as shown)

To construct an item number with options, take the base configuration item number (shown on above) and add each desired option to the end as shown underlined in this example

Legend	
<b>0</b>	Option as shown Other
<b>0</b>	Options available

- 1** Cefla floating worksurface with plate  
Note: Dental control/tools sold separately through Cefla
- 3** Add Track-mounted monitor arm
- 105** Replace Pulls with Black Pulls
- 109** Add Plastic PPE to upper cabinet
- 112** Add 2nd outlet
- 120** Add 4th drawer to base cabinets

See following page(s) for more info on options shown and additional options that can be configured.



# Ancillary Options

NOTE: Rear Console options **CAN** be used on the Extended Rear Consoles, **BUT**

Extended Rear Console options **CANNOT** be used on Rear consoles

## CEFLA Floating Worksurface With Plate(4Z)

Vendor Item #	1
PDDC SAP #	510080439
Description	Add a Cefla floating worksurface and plate, a premium cabinet-mounted delivery system that integrates into your cabinetry, offering durable, easy access to dental tools for improved workflow.
MSRP	\$1,295



## CEFLA Floating Worksurface With BDS Pivot Arm & Plate (4Z-BDS)



Vendor Item #	2
PDDC SAP #	510080502
Description	Install a Cefla floating worksurface with a BDS pivot arm and plate, a cabinet-mounted delivery system that integrates seamlessly, providing adjustable, durable access to dental equipment.
MSRP	\$2,795

## Gliding Monitor Mount (MM1)

Vendor Item #	3
PDDC SAP #	510080509
Description	Install a track gliding monitor mount (MMI) on the cabinet, allowing smooth, adjustable positioning of monitors along the track, enhancing workspace flexibility and optimizing visibility for improved productivity in dynamic work environments.
MSRP	\$1,195



# Additional Options

---

## Handle Swap



Vendor Item # 105

PDDC SAP # 101707833

Description Replace the existing brushed nickel pulls with modern black pulls on all cabinet doors and drawers to create a cohesive, contemporary aesthetic.

MSRP \$0

## Remove Pullout Drawer

Vendor Item # 107

PDDC SAP # 101707833

Description Remove the pullout drawer from the rear console to provide open shelving space, ideal for storing larger or bulkier items with easier access.

MSRP \$0



## Full Height Door



Vendor Item # 108

PDDC SAP # 101707833

Description Remove the pullout drawer in the rear console and install a full-height door, enhancing the cabinet's streamlined appearance and increasing storage for tall items.

MSRP \$0

## PPE Door (PLASTIC)

Vendor Item # 109

PDDC SAP # 510080313

Description Install a PPE door with a durable plastic faceplate on the upper cabinet, offering a lightweight yet sturdy solution for storing personal protective equipment, ensuring easy access and long-lasting functionality.

MSRP \$200



# Additional Options Cont.

---

## PPE Door (CONCEALED)



Vendor Item # 110

PDDC SAP # 510080306

Description Add a concealed PPE door to the upper cabinet, designed to seamlessly blend with the cabinet's exterior while providing discreet, secure storage for personal protective equipment, ideal for maintaining a clean and organized workspace.

MSRP \$200

Vendor Item # 111

PDDC SAP # 510080299

Description Add a PPE door to the upper cabinet, featuring a durable decorative metal faceplate, offering secure storage for protective equipment with a modern, robust finish.

MSRP \$200

## PPE Door (Metal)



## 2nd Outlet



Vendor Item # 112

PDDC SAP # 510080327

Description Add a second electrical outlet to the cabinet, complete with necessary hardware, to enhance functionality by providing additional power access for devices, perfect for multi-device workstations or additional equipment needs.

MSRP \$250

Vendor Item # 114

PDDC SAP # 510080320

Description Install a second outlet featuring dual USB and USB-C ports, along with all required hardware, to provide versatile charging options for modern devices, ensuring convenient power access for smartphones, tablets, and other USB-compatible equipment.

MSRP \$250

## 2nd Outlet - Dual USB & USB-C



# Additional Options Cont.

---

## 300mm Door



Vendor Item # 118

PDDC SAP # 101707833

Description Modify the slim base cabinet's front door to a 300mm width, designed for BDS assembly and peg mounting, ensuring compatibility with a slideshelf for organized storage of smaller items in tight spaces.

MSRP \$0

Vendor Item # 119

PDDC SAP # 101707833

Description Remove the pullout drawer from the rear console and install a false panel, creating a removable section that allows for easy access to the console's interior while maintaining a clean, seamless appearance.

MSRP \$0

## Removable Panel



## 4 Drawers



Vendor Item # 120

PDDC SAP # 510080460

Description Upgrade the rear console base cabinet by adding four drawers per cabinet, providing increased storage capacity and improved organization for tools, supplies, or equipment in a compact, accessible layout.

MSRP \$600

Vendor Item # 121

PDDC SAP # 510080257

Description Add an adjustable shelf to the center section of the base cabinet, offering flexible storage options to accommodate items of varying heights and ensuring efficient use of the cabinet's interior space.

MSRP \$150

## Adjustable Shelf



# Anthos Linea Extended Rear Treatment Console

Vendor Item #: ALRTC B00-H00-U21

PDCP SAP #: 510080607

Description: Rear TX console, Upper Cab Only, Disp Right

MSRP: \$4,150

## Console Dimensions:

Width: 68.6"

Height: 23.6"

Depth: 17.3"

For all dimensions please see the respective installation guide

## Standard Features Includes:

- ✘ Installed flush to wall
- ✘ Soft close concealed hinge doors
- ✘ Premium laminate fronts and doors



# Anthos Linea Extended Rear Treatment Console

Vendor Item #: ALRTC B00-H00-U24

PDCP SAP #: 510080761

Description: Rear TX console, Upper Cab Only, Disp Left

MSRP: \$4,150

## Console Dimensions:

Width: 68.6"

Height: 23.6"

Depth: 17.3"

For all dimensions please see the respective installation guide

## Standard Features Includes:

- ☒ Installed flush to wall
- ☒ Soft close concealed hinge doors
- ☒ Premium laminate fronts and doors



# Anthos Linea Extended Rear Treatment Console

Vendor Item #: ALRTC B21-H11-U21

PDCP SAP #: 101707793

Description: Rear TX Console, Right Side Sink, Hutch

MSRP: \$15,745

## Console Dimensions:

Width: 69.4"

Height: 75.5"

Depth: 20.2"

For all dimensions please see the respective installation guide

## Standard Features Includes:

- ✘ Structural steel powder coated base with built in levelers
- ✘ Installed flush to wall
- ✘ Soft close drawers
- ✘ Soft close concealed hinge doors
- ✘ Premium laminate fronts and doors
- ✘ Designer solid surface work surface
- ✘ Fully chaised for future equipment integration
- ✘ Hospital grade duplex
- ✘ Task lighting
- ✘ Undermount stainless steel sink with faucet and soap dispenser
- ✘ Above sink dispensing for gloves and towels



# Anthos Linea Extended Rear Treatment Console

Vendor Item #: ALRTC B22-H00-U00

PDCP SAP #: 510080852

Description: Rear TX console, Sink Right, All Drawers to Front

MSRP: \$10,695

Console Dimensions:

Width: 69.4"

Height: 30"

Depth: 20.2"

For all dimensions please see the respective installation guide

Standard Features Includes:

- ☒ Structural steel powder coated base with built in levelers
- ☒ Installed flush to wall
- ☒ Soft close drawers
- ☒ Soft close concealed hinge doors
- ☒ Premium laminate fronts and doors
- ☒ Designer solid surface work surface



# Anthos Linea Extended Rear Treatment Console

Vendor Item #: ALRTC B22-H00-U21

PDCP SAP #: 101707794

Description: Rear TX Console, Right Side Sink, No Hutch

MSRP: \$14,695

Console Dimensions:

Width: 69.4"

Height: 75.5"

Depth: 20.2"

For all dimensions please see the respective installation guide

Standard Features Includes:

- ✘ Structural steel powder coated base with built in levelers
- ✘ Installed flush to wall
- ✘ Soft close drawers
- ✘ Soft close concealed hinge doors
- ✘ Premium laminate fronts and doors
- ✘ Designer solid surface work surface
- ✘ Undermount stainless steel sink with faucet and soap dispenser
- ✘ Above sink dispensing for gloves and towels



# Anthos Linea Extended Rear Treatment Console

Vendor Item #: ALRTC B24-H11-U24

PDCP SAP #: 101707795

Description: Rear TX Console, Left Side Sink, Hutch

MSRP: \$15,745

Console Dimensions:

Width: 69.4"

Height: 75.5"

Depth: 20.2"

For all dimensions please see the respective installation guide

Standard Features Includes:

- ❑ Structural steel powder coated base with built in levelers
- ❑ Installed flush to wall
- ❑ Soft close drawers
- ❑ Soft close concealed hinge doors
- ❑ Premium laminate fronts and doors
- ❑ Designer solid surface work surface
- ❑ Fully chaised for future equipment integration
- ❑ Hospital grade duplex
- ❑ Task lighting
- ❑ Undermount stainless steel sink with faucet and soap dispenser
- ❑ Above sink dispensing for gloves and towels



# Anthos Linea Extended Rear Treatment Console

Vendor Item #: ALRTC B25-H00-U00

PDCP SAP #: 510080859

Description: Rear TX console, Sink Left, All Drawers to Front

MSRP: \$10,695

Console Dimensions:

Width: 69.4"

Height: 30"

Depth: 20.2"

For all dimensions please see the respective installation guide

Standard Features Includes:

- ☒ Structural steel powder coated base with built in levelers
- ☒ Installed flush to wall
- ☒ Soft close drawers
- ☒ Soft close concealed hinge doors
- ☒ Premium laminate fronts and doors
- ☒ Designer solid surface work surface



# Anthos Linea Extended Rear Treatment Console

Vendor Item #: ALRTC B25-H00-U24

PDCP SAP #: 101707796

Description: Rear TX Console, Left Side Sink,  
No Hutch

MSRP: \$14,695

Console Dimensions:

Width: 69.4"

Height: 75.5"

Depth: 20.2"

For all dimensions please see the respective installation guide

Standard Features Includes:

- ✘ Structural steel powder coated base with built in levelers
- ✘ Installed flush to wall
- ✘ Soft close drawers
- ✘ Soft close concealed hinge doors
- ✘ Premium laminate fronts and doors
- ✘ Designer solid surface work surface
- ✘ Undermount stainless steel sink with faucet and soap dispenser
- ✘ Above sink dispensing for gloves and towels



# Additional Options

## Remove Trash Cutout



Vendor Item # 101

PDDC SAP # 101707833

Description Remove the existing trash cut-out from the work surface, restoring the countertop to a smooth, uninterrupted finish for a cleaner look and increased usable workspace.

MSRP \$0

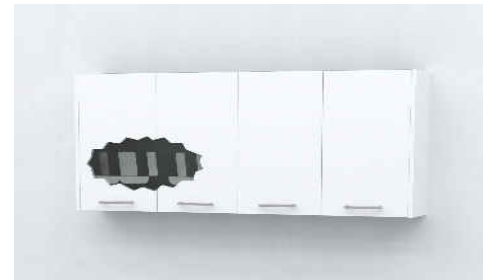
Vendor Item # 102

PDDC SAP # 101707833

Description Hide the PPE storage by removing the door hardware and adding a new glovebox return to the upper cabinets, ensuring a seamless appearance while maintaining secure, concealed PPE storage.

MSRP \$0

## Concealed PPE



## Touchless Faucet



Vendor Item # 103

PDDC SAP # 510080446

Description Swap the existing manual faucet with a touchless faucet for hands-free operation, improving hygiene and convenience in the workspace, ideal for high-use environments.

MSRP \$1000

Vendor Item # 104

PDDC SAP # 510080250

Description Remove the standard PPE door and install a decorative metal PPE door on the upper cabinets, providing a durable, stylish storage solution for protective equipment with enhanced longevity.

MSRP \$150

## Metal PPE



## Remove Sink & HDW



Vendor Item # 113

PDDC SAP # 101707833

Description Remove the sink, faucet, and mounting hardware from the cabinet to create a smooth countertop, perfect for repurposing the space for storage or a new workstation.

MSRP \$0

# ANTHOS LINEA SIDE TREATMENT CONSOLE

Vendor Item #: ALRTC B00-H00-U31

PDCP SAP #: 510079046

Description: Upper Dispensing Cab.

MSRP: \$1,460

## Console Dimensions:

Width: 28.2"

Height: 27.2"

Depth: 9"

For all dimensions please see the respective installation guide

## Standard Features Includes:

- ☒ Installed flush to wall
- ☒ Soft close concealed hinge doors
- ☒ Premium laminate fronts and doors
- ☒ Above sink dispensing for gloves and towels



# ANTHOS LINEA SIDE TREATMENT CONSOLE

Vendor Item #: ALRTC B00-H00-U32

PDCP SAP #: 510079039

Description: Upper Storage Cab.

MSRP: \$1,460

## Console Dimensions:

Width: 28.2"

Height: 27.2"

Depth: 9"

For all dimensions please see the respective installation guide

## Standard Features Includes:

- ☒ Installed flush to wall
- ☒ Soft close concealed hinge doors
- ☒ Premium laminate fronts and doors



# ANTHOS LINEA SIDE TREATMENT CONSOLE

Vendor Item #: ALRTC B00-H00-U33

PDCP SAP #: 510079550

Description: Upper Dispensing Cab Left &  
Storage Cab Right

MSRP: \$2,300

Standard Features Includes:

- ☒ Installed flush to wall
- ☒ Soft close concealed hinge doors
- ☒ Premium laminate fronts and doors
- ☒ Above sink dispensing for gloves and towels

Console Dimensions:

Width: 55.1"

Height: 27.2"

Depth: 9"

For all dimensions please see the respective installation guide



# ANTHOS LINEA SIDE TREATMENT CONSOLE

Vendor Item #: ALRTC B00-H00-U34

PDCP SAP #: 510079543

Description: Upper Dispensing Cab Right &  
Storage Cab Left

MSRP: \$2,300

Console Dimensions:

Width: 55.1"

Height: 27.2"

Depth: 9"

For all dimensions please see the respective installation guide

Standard Features Includes:

- ☒ Installed flush to wall
- ☒ Soft close concealed hinge doors
- ☒ Premium laminate fronts and doors
- ☒ Above sink dispensing for gloves and towels



# ANTHOS LINEA SIDE TREATMENT CONSOLE

Vendor Item #: ALRTC B00-H00-U35

PDCP SAP #: 510079557

Description: Double Upper Storage Cab.

Standard Features Includes:

- ❑ Installed flush to wall
- ❑ Soft close concealed hinge doors
- ❑ Premium laminate fronts and doors

MSRP: \$2,300

Console Dimensions:

Width: 55.1"

Height: 27.2"

Depth: 9"

For all dimensions please see the respective installation guide



# ANTHOS LINEA SIDE TREATMENT CONSOLE

Vendor Item #: ALRTC B00-H00-U37

PDCP SAP #: 510079571

Description: Upper Dispensing Cab Left &  
Double Storage Cab Right

MSRP: \$3,610

Console Dimensions:

Width: 68.6"

Height: 27.2"

Depth: 9"

For all dimensions please see the respective installation guide

Standard Features Includes:

- ☒ Installed flush to wall
- ☒ Soft close concealed hinge doors
- ☒ Premium laminate fronts and doors
- ☒ Above sink dispensing for gloves and towels



# ANTHOS LINEA SIDE TREATMENT CONSOLE

Vendor Item #: ALRTC B00-H00-U38

PDCP SAP #: 510079578

Description: Upper Dispensing Cab Right &  
Double Storage Cab Left

MSRP: \$3,610

Console Dimensions:

Width: 68.6"

Height: 27.2"

Depth: 9"

For all dimensions please see the respective installation guide

Standard Features Includes:

- ☒ Installed flush to wall
- ☒ Soft close concealed hinge doors
- ☒ Premium laminate fronts and doors
- ☒ Above sink dispensing for gloves and towels



# ANTHOS LINEA SIDE TREATMENT CONSOLE

Vendor Item #: ALRTC B00-H00-U39

PDCP SAP #: 510079564

Description: Upper Storage Cab Full

MSRP: \$3,610

Console Dimensions:

Width: 68.6"

Height: 27.2"

Depth: 9"

For all dimensions please see the respective installation guide

Standard Features Includes:

- ☒ Installed flush to wall
- ☒ Soft close concealed hinge doors
- ☒ Premium laminate fronts and doors



# ANTHOS LINEA SIDE TREATMENT CONSOLE

Vendor Item #: ALSTC B31-H00-U31

PDCP SAP #: 101707798

Description: Side TX Console, Left Side Sink, Right Side Drawers, Upper Disp. Cab.

MSRP: \$6,825

Console Dimensions:

Width: 55.9"

Height: 76.2"

Depth: 19.8"

For all dimensions please see the respective installation guide

Standard Features Includes:

- ✘ Modern floating style console
- ✘ Installed flush to wall
- ✘ Soft close drawers
- ✘ Soft close concealed hinge doors
- ✘ Premium laminate fronts and doors
- ✘ Designer solid surface work surface
- ✘ Undermount stainless steel sink with faucet and soap dispenser
- ✘ Above sink dispensing for gloves and towels



# ANTHOS LINEA SIDE TREATMENT CONSOLE

Vendor Item #: ALSTC B31-H00-U33

PDCP SAP #: 101707799

Description: Side TX Console, Left Sink, Right Side  
Drawers, Upper Disp. & Storage Cab.

MSRP: \$7,665

Console Dimensions:

Width: 55.9"

Height: 76.2"

Depth: 19.8"

For all dimensions please see the respective installation guide

Standard Features Includes:

- ❑ Modern floating style console
- ❑ Installed flush to wall
- ❑ Soft close drawers
- ❑ Soft close concealed hinge doors
- ❑ Premium laminate fronts and doors
- ❑ Designer solid surface work surface
- ❑ Undermount stainless steel sink with faucet and soap dispenser
- ❑ Above sink dispensing for gloves and towels
- ❑ Above counter storage console



# ANTHOS LINEA SIDE TREATMENT CONSOLE

Vendor Item #: ALSTC B31-H00-U00

PDCP SAP #: 101707800

Description: Side TX Console, Left Side Sink, Right Side Drawers, No Upper Cab.

MSRP: \$5,515

Console Dimensions:

Width: 55.9"

Height: 32.5"

Depth: 19.8"

For all dimensions please see the respective installation guide

Standard Features Includes:

- ✘ Modern floating style console
- ✘ Installed flush to wall
- ✘ Soft close drawers
- ✘ Soft close concealed hinge doors
- ✘ Premium laminate fronts and doors
- ✘ Designer solid surface work surface
- ✘ Undermount stainless steel sink with faucet and soap dispenser



# ANTHOS LINEA SIDE TREATMENT CONSOLE

Vendor Item #: ALSTC B32-H00-U31

PDCP SAP #: 101707801

Description: Side TX Console, Left Side Drawers,  
Right Side Sink, Upper Disp. Cab.

MSRP: \$6,825

Console Dimensions:

Width: 55.9"

Height: 76.2"

Depth: 19.2"

For all dimensions please see the respective installation guide

Standard Features Includes:

- ▣ Modern floating style console
- ▣ Installed flush to wall
- ▣ Soft close drawers
- ▣ Soft close concealed hinge doors
- ▣ Premium laminate fronts and doors
- ▣ Designer solid surface work surface
- ▣ Undermount stainless steel sink with faucet and soap dispenser
- ▣ Above sink dispensing for gloves and towels



# ANTHOS LINEA SIDE TREATMENT CONSOLE

Vendor Item #: ALSTC B32-H00-U34

PDCP SAP #: 101707802

Description: Side TX Console, Left Side Drawers, Right Side Sink, Upper Disp. & Storage Cab.

MSRP: \$7,665

Console Dimensions:

Width: 55.9"

Height: 76.2"

Depth: 19.2"

For all dimensions please see the respective installation guide

Standard Features Includes:

- ✘ Modern floating style console
- ✘ Installed flush to wall
- ✘ Soft close drawers
- ✘ Soft close concealed hinge doors
- ✘ Premium laminate fronts and doors
- ✘ Designer solid surface work surface
- ✘ Undermount stainless steel sink with faucet and soap dispenser
- ✘ Above sink dispensing for gloves and towels
- ✘ Above counter storage console



# ANTHOS LINEA SIDE TREATMENT CONSOLE

Vendor Item #: ALSTC B32-H00-U00

PDCP SAP #: 101707803

Description: Side TX Console, Left Side Drawers,  
Right Side Sink, No Upper Cab.

MSRP: \$5,515

Console Dimensions:

Width: 55.9"

Height: 32.5"

Depth: 19.2"

For all dimensions please see the respective installation guide

Standard Features Includes:

- ✘ Modern floating style console
- ✘ Installed flush to wall
- ✘ Soft close drawers
- ✘ Soft close concealed hinge doors
- ✘ Premium laminate fronts and doors
- ✘ Designer solid surface work surface
- ✘ Undermount sink with manual faucet and soap dispenser



# ANTHOS LINEA SIDE TREATMENT CONSOLE

Vendor Item #: ALSTC B33-H00-U32

PDCP SAP #: 101707804

Description: Side TX Console, Left and Right side  
Drawers, Upper Storage Cab.

MSRP: \$6,825

Console Dimensions:

Width: 55.9"

Height: 76.2"

Depth: 19.2"

For all dimensions please see the respective installation guide

Standard Features Includes:

- ✘ Modern floating style console
- ✘ Installed flush to wall
- ✘ Soft close drawers
- ✘ Premium laminate fronts and doors
- ✘ Designer solid surface work surface
- ✘ Upper storage cabinet



# ANTHOS LINEA SIDE TREATMENT CONSOLE

Vendor Item #: ALSTC B33-H00-U35

PDCP SAP #: 101707805

Description: Side TX Console, Left and Right Side  
Drawers, Upper Storage Cab.

MSRP: \$7,665

Console Dimensions:

Width: 55.9"

Height: 76.2"

Depth: 19.2"

For all dimensions please see the respective installation guide

Standard Features Includes:

- ❑ Modern floating style console
- ❑ Installed flush to wall
- ❑ Soft close drawers
- ❑ Premium laminate fronts and doors
- ❑ Designer solid surface work surface
- ❑ Upper storage cabinets



# ANTHOS LINEA SIDE TREATMENT CONSOLE

Vendor Item #: ALSTC B33-H00-U00

PDCP SAP #: 101707806

Description: Side TX Console, Left and Right Side  
Drawers, No Upper Cab.

MSRP: \$5,515

Standard Features Includes:

- ☒ Modern floating style console
- ☒ Installed flush to wall
- ☒ Soft close drawers
- ☒ Premium laminate fronts and doors
- ☒ Designer solid surface work surface

Console Dimensions:

Width: 55.9"

Height: 32.5"

Depth: 19.2"

For all dimensions please see the respective installation guide



# ANTHOS LINEA SIDE TREATMENT CONSOLE

Vendor Item #: ALSTC B34-H00-U31

PDCP SAP #: 101707807

Description: Side TX Console, Left Side Sink, Right Side Open, Upper Disp. Cab.

MSRP: \$6,825

Console Dimensions:

Width: 55.9"

Height: 76.2"

Depth: 19.2"

For all dimensions please see the respective installation guide

Standard Features Includes:

- ▣ Modern floating style console
- ▣ Installed flush to wall
- ▣ Knee space
- ▣ Soft close concealed hinge doors
- ▣ Premium laminate fronts and doors
- ▣ Designer solid surface work surface
- ▣ Undermount stainless steel sink with faucet and soap dispenser
- ▣ Above sink dispensing for gloves and towels



# ANTHOS LINEA SIDE TREATMENT CONSOLE

Vendor Item #: ALSTC B34-H00-U33

PDCP SAP #: 101707808

Description: Side TX Console, Left Side Sink, Right Side Open, Upper Disp. and Storage Cab.

MSRP: \$7,665

Console Dimensions:

Width: 55.9"

Height: 76.2"

Depth: 19.2"

For all dimensions please see the respective installation guide

Standard Features Includes:

- ✘ Modern floating style console
- ✘ Installed flush to wall
- ✘ Knee space
- ✘ Soft close concealed hinge doors
- ✘ Premium laminate fronts and doors
- ✘ Designer solid surface work surface
- ✘ Undermount stainless steel sink with faucet and soap dispenser
- ✘ Above sink dispensing for gloves and towels
- ✘ Above counter storage console



# ANTHOS LINEA SIDE TREATMENT CONSOLE

Vendor Item #: ALSTC B34-H00-U00

PDCP SAP #: 101707809

Description: Side TX Cinsole, Left Side Sink, Right Side Open, No Upper Cab.

MSRP: \$5,515

Standard Features Includes:

- ✘ Modern floating style console
- ✘ Installed flush to wall
- ✘ Knee space
- ✘ Premium laminate fronts and doors
- ✘ Designer solid surface work surface

Console Dimensions:

Width: 55.9"

Height: 32.5"

Depth: 19.2"

For all dimensions please see the respective installation guide



# ANTHOS LINEA SIDE TREATMENT CONSOLE

Vendor Item #: ALSTC B35-H00-U31

PDCP SAP #: 101707810

Description: Side TX Console, Left Side Open,  
Right Side Sink, Upper Disp. Cab.

MSRP: \$6,825

Console Dimensions:

Width: 55.9"

Height: 76.2"

Depth: 19.2"

For all dimensions please see the respective installation guide

Standard Features Includes:

- ❑ Modern floating style console
- ❑ Installed flush to wall
- ❑ Knee space
- ❑ Soft close concealed hinge doors
- ❑ Premium laminate fronts and doors
- ❑ Designer solid surface work surface
- ❑ Undermount stainless steel sink with faucet and soap dispenser
- ❑ Above sink dispensing for gloves and towels



# ANTHOS LINEA SIDE TREATMENT CONSOLE

Vendor Item #: ALSTC B35-H00-U34

PDCP SAP #: 101707811

Description: Side TX Console, Left Side Open, Right Side Sink, Upper Disp. & Storage Cab.

MSRP: \$7,665

Console Dimensions:

Width: 55.9"

Height: 76.2"

Depth: 19.2"

For all dimensions please see the respective installation guide

Standard Features Includes:

- ▣ Modern floating style console
- ▣ Installed flush to wall
- ▣ Knee space
- ▣ Soft close concealed hinge doors
- ▣ Premium laminate fronts and doors
- ▣ Designer solid surface work surface
- ▣ Undermount stainless steel sink with faucet and soap dispenser
- ▣ Above sink dispensing for gloves and towels
- ▣ Above counter storage console



# ANTHOS LINEA SIDE TREATMENT CONSOLE

Vendor Item #: ALSTC B35-H00-U00

PDCP SAP #: 101707812

Description: Side TX Console, Left Side Open,  
Right Side Sink, No Upper Cab.

MSRP: \$5,515

Standard Features Includes:

- ⌘ Modern floating style console
- ⌘ Installed flush to wall
- ⌘ Knee space
- ⌘ Premium laminate fronts and doors
- ⌘ Designer solid surface work surface

Console Dimensions:

Width: 55.9"

Height: 32.5"

Depth: 19.2"

For all dimensions please see the respective installation guide



# ANTHOS LINEA SIDE TREATMENT CONSOLE

Vendor Item #: ALSTC 03A-000-U00

PDCP SAP #: 510080663

Description: Side TX Console, Left Sink and  
Trash Opening, No Upper Cab.

MSRP: \$6015

Console Dimensions:

Width: 42.4"

Height: 32.5"

Depth: 17"

For all dimensions please see the respective installation guide

Standard Features Includes:

- ❑ Undermount sink with manual faucet and soap dispenser
- ❑ Soft close/anti slam drawers and doors
- ❑ Premium laminate fronts and doors
- ❑ Designer solid surface work surface w/ trash cutout
- ❑ Structural steel powder coated toekick
- ❑ Modern style console
- ❑ Installed flush to wall



# ANTHOS LINEA SIDE TREATMENT CONSOLE

Vendor Item #: ALSTC 03A-000-U31

PDCP SAP #: 510080558

Description: Side TX Console, Left Sink and Trash  
Opening, Upper Dispensing Cab.

MSRP: \$7,325

Console Dimensions:

Width: 42.4"

Height: 76.1"

Depth: 17"

For all dimensions please see the respective installation guide

Standard Features Includes:

- ✘ Undermount sink with manual faucet and soap dispenser
- ✘ Soft close/anti slam drawers and doors
- ✘ Premium laminate fronts and doors
- ✘ Designer solid surface work surface w/ trash cutout
- ✘ Structural steel powder coated toekick
- ✘ Above sink dispensing for gloves and towels
- ✘ Upper storage cabinets
- ✘ Modern style console
- ✘ Installed flush to wall



# ANTHOS LINEA SIDE TREATMENT CONSOLE

Vendor Item #: ALSTC 03A-000-U32

PDCP SAP #: 510080558

Description: Side TX Console, Left Sink and Trash  
Opening, Upper Storage Cab.

MSRP: \$6,925

Console Dimensions:

Width: 42.4"

Height: 76.1"

Depth: 17"

For all dimensions please see the respective installation guide

Standard Features Includes:

- ❑ Undermount sink with manual faucet and soap dispenser
- ❑ Soft close/anti slam drawers and doors
- ❑ Premium laminate fronts and doors
- ❑ Designer solid surface work surface w/ trash cutout
- ❑ Structural steel powder coated toekick
- ❑ Upper storage cabinets
- ❑ Modern style console
- ❑ Installed flush to wall



# ANTHOS LINEA SIDE TREATMENT CONSOLE

Vendor Item #: ALSTC 03B-000-U00

PDCP SAP #: 510080768

Description: Side TX Console, Right Sink and Trash  
Opening, No Upper Cab.

MSRP: \$6015

Console Dimensions:

Width: 42.4"

Height: 32.5"

Depth: 17"

For all dimensions please see the respective installation guide

Standard Features Includes:

- ✘ Undermount sink with manual faucet and soap dispenser
- ✘ Soft close/anti slam drawers and doors
- ✘ Premium laminate fronts and doors
- ✘ Designer solid surface work surface w/ trash cutout
- ✘ Structural steel powder coated toekick
- ✘ Modern style console
- ✘ Installed flush to wall



# ANTHOS LINEA SIDE TREATMENT CONSOLE

Vendor Item #: ALSTC 03B-000-U31

PDCP SAP #: 510080838

Description: Side TX Console, Right Sink and Trash  
Opening, Upper Dispensing Cab.

MSRP: \$7,325

Console Dimensions:

Width: 42.4"

Height: 76.1"

Depth: 17"

For all dimensions please see the respective installation guide

Standard Features Includes:

- ✘ Undermount sink with manual faucet and soap dispenser
- ✘ Soft close/anti slam drawers and doors
- ✘ Premium laminate fronts and doors
- ✘ Designer solid surface work surface w/ trash cutout
- ✘ Structural steel powder coated toekick
- ✘ Above sink dispensing for gloves and towels
- ✘ Upper storage cabinets
- ✘ Modern style console
- ✘ Installed flush to wall



# ANTHOS LINEA SIDE TREATMENT CONSOLE

Vendor Item #: ALSTC 03B-000-U32

PDCP SAP #: 510080642

Description: Side TX Console, Right Sink and Trash  
Opening, Upper Storage Cab.

MSRP: \$6925

Console Dimensions:

Width: 42.4"  
Height: 76.1"  
Depth: 17"

For all dimensions please see the respective installation guide

Standard Features Includes:

- ❑ Undermount sink with manual faucet and soap dispenser
- ❑ Soft close/anti slam drawers and doors
- ❑ Premium laminate fronts and doors
- ❑ Designer solid surface work surface w/ trash cutout
- ❑ Structural steel powder coated toekick
- ❑ Upper storage cabinets
- ❑ Modern style console
- ❑ Installed flush to wall



# ANTHOS LINEA SIDE TREATMENT CONSOLE

Vendor Item #: ALSTC 03C-000-U00

PDCP SAP #: 510080796

Description: Side TX Console, Left Trash  
Opening, No Upper Cab.

MSRP: \$5,615

Console Dimensions:

Width: 42.4"

Height: 32.5"

Depth: 17"

For all dimensions please see the respective installation guide

Standard Features Includes:

- ❑ Soft close/anti slam drawers and doors
- ❑ Premium laminate fronts and doors
- ❑ Designer solid surface work surface w/ trash cutout
- ❑ Structural steel powder coated toekick
- ❑ Modern style console
- ❑ Installed flush to wall



# ANTHOS LINEA SIDE TREATMENT CONSOLE

Vendor Item #: ALSTC 03C-000-U31

PDCP SAP #: 510080712

Description: Side TX Console, Left Trash  
Opening, Upper Dispensing Cab.

MSRP: \$6925

Console Dimensions:

Width: 42.4"

Height: 76.1"

Depth: 17"

For all dimensions please see the respective installation guide

Standard Features Includes:

- ❑ Undermount sink with manual faucet and soap dispenser
- ❑ Soft close/anti slam drawers and doors
- ❑ Premium laminate fronts and doors
- ❑ Designer solid surface work surface w/ trash cutout
- ❑ Structural steel powder coated toekick
- ❑ Above trash dispensing for gloves and towels
- ❑ Upper storage cabinets
- ❑ Modern style console
- ❑ Installed flush to wall



# ANTHOS LINEA SIDE TREATMENT CONSOLE

Vendor Item #: ALSTC 03C-000-U32

PDCP SAP #: 510080565

Description: Side TX Console, Left Trash  
Opening, Upper Storage Cab.

MSRP: \$6,925

Console Dimensions:

Width: 42.4"

Height: 76.1"

Depth: 17"

For all dimensions please see the respective installation guide

Standard Features Includes:

- ❑ Soft close/anti slam drawers and doors
- ❑ Premium laminate fronts and doors
- ❑ Designer solid surface work surface w/ trash cutout
- ❑ Structural steel powder coated toekick
- ❑ Upper storage cabinets
- ❑ Modern style console
- ❑ Installed flush to wall



# ANTHOS LINEA SIDE TREATMENT CONSOLE

Vendor Item #: ALSTC 03D-000-U00

PDCP SAP #: 510080551

Description: Side TX Console, Right Trash  
Opening, No Upper Cab.

MSRP: \$5,615

Console Dimensions:

Width: 42.4"

Height: 32.5"

Depth: 17"

For all dimensions please see the respective installation guide

Standard Features Includes:

- ❑ Soft close/anti slam drawers and doors
- ❑ Premium laminate fronts and doors
- ❑ Designer solid surface work surface w/ trash cutout
- ❑ Structural steel powder coated toekick
- ❑ Modern style console
- ❑ Installed flush to wall



# ANTHOS LINEA SIDE TREATMENT CONSOLE

Vendor Item #: ALSTC 03D-000-U31

PDCP SAP #: 510080782

Description: Side TX Console, Right Trash  
Opening, Upper Dispensing Cab.

MSRP: \$6,925

Console Dimensions:

Width: 42.4"

Height: 76.1"

Depth: 17"

For all dimensions please see the respective installation guide

Standard Features Includes:

- ❑ Undermount sink with manual faucet and soap dispenser
- ❑ Soft close/anti slam drawers and doors
- ❑ Premium laminate fronts and doors
- ❑ Designer solid surface work surface w/ trash cutout
- ❑ Structural steel powder coated toekick
- ❑ Above trash dispensing for gloves and towels
- ❑ Upper storage cabinets
- ❑ Modern style console
- ❑ Installed flush to wall



# ANTHOS LINEA SIDE TREATMENT CONSOLE

Vendor Item #: ALSTC 03D-000-U32

PDCP SAP #: 510080635

Description: Side TX Console, Right Trash  
Opening, Upper Storage Cab.

MSRP: \$6925

Console Dimensions:

Width: 42.4"

Height: 76.1"

Depth: 17"

For all dimensions please see the respective installation guide

Standard Features Includes:

- ❑ Soft close/anti slam drawers and doors
- ❑ Premium laminate fronts and doors
- ❑ Designer solid surface work surface w/ trash cutout
- ❑ Structural steel powder coated toekick
- ❑ Upper storage cabinets
- ❑ Modern style console
- ❑ Installed flush to wall



# ANTHOS LINEA SIDE TREATMENT CONSOLE

Vendor Item #: ALSTC 03E-000-U00

PDCP SAP #: 510080586

Description: Side TX Console, Left Sink and  
Trash Opening, No Upper Cab.

MSRP: \$7,015

Console Dimensions:

Width: 55.9"

Height: 32.5"

Depth: 17"

For all dimensions please see the respective installation guide

Standard Features Includes:

- ☒ Undermount sink with manual faucet and soap dispenser
- ☒ Soft close/anti slam drawers and doors
- ☒ Premium laminate fronts and doors
- ☒ Designer solid surface work surface w/ trash cutout
- ☒ Structural steel powder coated toekick
- ☒ Modern style console
- ☒ Installed flush to wall



# ANTHOS LINEA SIDE TREATMENT CONSOLE

Vendor Item #: ALSTC 03E-000-U31

PDCP SAP #: 510080677

Description: Side TX Console, Left Sink and Trash Opening, Upper Dispensing Cab.

MSRP: \$8,325

Console Dimensions:

Width: 55.9"

Height: 76.1"

Depth: 17"

For all dimensions please see the respective installation guide

Standard Features Includes:

- ❑ Undermount sink with manual faucet and soap dispenser
- ❑ Soft close/anti slam drawers and doors
- ❑ Premium laminate fronts and doors
- ❑ Designer solid surface work surface w/ trash cutout
- ❑ Structural steel powder coated toekick
- ❑ Above sink dispensing for gloves and towels
- ❑ Upper storage cabinets
- ❑ Modern style console
- ❑ Installed flush to wall



# ANTHOS LINEA SIDE TREATMENT CONSOLE

Vendor Item #: ALSTC 03E-000-U33

PDCP SAP #: 510080670

Description: Side TX Console, Left Sink and Trash Opening,  
Upper Dispensing and Storage Cab.

MSRP: \$9,165

Console Dimensions:

Width: 55.9"

Height: 76.1"

Depth: 17"

For all dimensions please see the respective installation guide

Standard Features Includes:

- ✘ Undermount sink with manual faucet and soap dispenser
- ✘ Soft close/anti slam drawers and doors
- ✘ Premium laminate fronts and doors
- ✘ Designer solid surface work surface w/ trash cutout
- ✘ Structural steel powder coated toekick
- ✘ Above sink dispensing for gloves and towels
- ✘ Upper storage cabinets
- ✘ Modern style console
- ✘ Installed flush to wall



# ANTHOS LINEA SIDE TREATMENT CONSOLE

Vendor Item #: ALSTC 03F-000-U00

PDCP SAP #: 510080733

Description: Side TX Console, Right Sink and  
Trash Opening, No Upper Cab.

MSRP: \$7,015

Console Dimensions:

Width: 55.9"

Height: 32.5"

Depth: 17"

For all dimensions please see the respective installation guide

Standard Features Includes:

- ⊠ Undermount sink with manual faucet and soap dispenser
- ⊠ Soft close/anti slam drawers and doors
- ⊠ Premium laminate fronts and doors
- ⊠ Designer solid surface work surface w/ trash cutout
- ⊠ Structural steel powder coated toekick
- ⊠ Modern style console
- ⊠ Installed flush to wall



# ANTHOS LINEA SIDE TREATMENT CONSOLE

Vendor Item #: ALSTC 03F-000-U31

PDCP SAP #: 510080656

Description: Side TX Console, Right Sink and Trash  
Opening, Upper Dispensing Cab.

MSRP: \$8,325

Console Dimensions:

Width: 55.9"

Height: 76.1"

Depth: 17"

For all dimensions please see the respective installation guide

Standard Features Includes:

- ❑ Undermount sink with manual faucet and soap dispenser
- ❑ Soft close/anti slam drawers and doors
- ❑ Premium laminate fronts and doors
- ❑ Designer solid surface work surface w/ trash cutout
- ❑ Structural steel powder coated toekick
- ❑ Above sink dispensing for gloves and towels
- ❑ Upper storage cabinets
- ❑ Modern style console
- ❑ Installed flush to wall



# ANTHOS LINEA SIDE TREATMENT CONSOLE

Vendor Item #: ALSTC 03F-000-U34

PDCP SAP #: 510080572

Description: Side TX Console, Right Sink and Trash  
Opening, Upper Dispensing and Storage Cab.

MSRP: \$9,165

Console Dimensions:

Width: 55.9"

Height: 76.1"

Depth: 17"

For all dimensions please see the respective installation guide

Standard Features Includes:

- ❑ Undermount sink with manual faucet and soap dispenser
- ❑ Soft close/anti slam drawers and doors
- ❑ Premium laminate fronts and doors
- ❑ Designer solid surface work surface w/ trash cutout
- ❑ Structural steel powder coated toekick
- ❑ Above sink dispensing for gloves and towels
- ❑ Upper storage cabinets
- ❑ Modern style console
- ❑ Installed flush to wall



# ANTHOS LINEA SIDE TREATMENT CONSOLE

Vendor Item #: ALSTC 03G-000-U00

PDCP SAP #: 510080803

Description: Side TX Console, Left Trash  
Opening, No Upper Cab.

MSRP: \$6615

Console Dimensions:

Width: 55.9"

Height: 32.5"

Depth: 17"

For all dimensions please see the respective installation guide

Standard Features Includes:

- ❑ Soft close/anti slam drawers and doors
- ❑ Premium laminate fronts and doors
- ❑ Designer solid surface work surface w/ trash cutout
- ❑ Structural steel powder coated toekick
- ❑ Modern style console
- ❑ Installed flush to wall



# ANTHOS LINEA SIDE TREATMENT CONSOLE

Vendor Item #: ALSTC 03G-000-U31

PDCP SAP #: 510080824

Description: Side TX Console, Left Trash  
Opening, Upper Dispensing Cab.

MSRP: \$7,925

Console Dimensions:

Width: 55.9"

Height: 76.1"

Depth: 17"

For all dimensions please see the respective installation guide

Standard Features Includes:

- ❑ Undermount sink with manual faucet and soap dispenser
- ❑ Soft close/anti slam drawers and doors
- ❑ Premium laminate fronts and doors
- ❑ Designer solid surface work surface w/ trash cutout
- ❑ Structural steel powder coated toekick
- ❑ Above trash dispensing for gloves and towels
- ❑ Upper storage cabinets
- ❑ Modern style console
- ❑ Installed flush to wall



# ANTHOS LINEA SIDE TREATMENT CONSOLE

Vendor Item #: ALSTC 03G-000-U32

PDCP SAP #: 510080747

Description: Side TX Console, Left Trash  
Opening, Upper Storage Cab.

MSRP: \$7,925

Console Dimensions:

Width: 55.9"

Height: 76.1"

Depth: 17"

For all dimensions please see the respective installation guide

Standard Features Includes:

- ☒ Soft close/anti slam drawers and doors
- ☒ Premium laminate fronts and doors
- ☒ Designer solid surface work surface w/ trash cutout
- ☒ Structural steel powder coated toekick
- ☒ Upper storage cabinets
- ☒ Modern style console
- ☒ Installed flush to wall



# ANTHOS LINEA SIDE TREATMENT CONSOLE

Vendor Item #: ALSTC 03G-000-U35

PDCP SAP #: 510080649

Description: Side TX Console, Left Trash  
Opening, Upper Storage Cab.

MSRP: \$7,925

Console Dimensions:

Width: 55.9"

Height: 76.1"

Depth: 17"

For all dimensions please see the respective installation guide

Standard Features Includes:

- ❑ Soft close/anti slam drawers and doors
- ❑ Premium laminate fronts and doors
- ❑ Designer solid surface work surface w/ trash cutout
- ❑ Structural steel powder coated toekick
- ❑ Upper storage cabinets
- ❑ Modern style console
- ❑ Installed flush to wall



# ANTHOS LINEA SIDE TREATMENT CONSOLE

Vendor Item #: ALSTC 03H-000-U00

PDCP SAP #: 510080579

Description: Side TX Console, Right Trash  
Opening, No Upper Cab.

MSRP: \$6615

Console Dimensions:

Width: 55.9"

Height: 32.5"

Depth: 17"

For all dimensions please see the respective installation guide

Standard Features Includes:

- ❑ Soft close/anti slam drawers and doors
- ❑ Premium laminate fronts and doors
- ❑ Designer solid surface work surface w/ trash cutout
- ❑ Structural steel powder coated toekick
- ❑ Modern style console
- ❑ Installed flush to wall



# ANTHOS LINEA SIDE TREATMENT CONSOLE

Vendor Item #: ALSTC 03H-000-U31

PDCP SAP #: 510080845

Description: Side TX Console, Right Trash  
Opening, Upper Dispensing Cab.

MSRP: \$7,925

Console Dimensions:

Width: 55.9"

Height: 76.1"

Depth: 17"

For all dimensions please see the respective installation guide

Standard Features Includes:

- ❑ Undermount sink with manual faucet and soap dispenser
- ❑ Soft close/anti slam drawers and doors
- ❑ Premium laminate fronts and doors
- ❑ Designer solid surface work surface w/ trash cutout
- ❑ Structural steel powder coated toekick
- ❑ Above trash dispensing for gloves and towels
- ❑ Upper storage cabinets
- ❑ Modern style console
- ❑ Installed flush to wall



# ANTHOS LINEA SIDE TREATMENT CONSOLE

Vendor Item #: ALSTC 03H-000-U32

PDCP SAP #: 510080754

Description: Side TX Console, Right Trash  
Opening, Upper Storage Cab.

MSRP: \$7,925

Console Dimensions:

Width: 55.9"

Height: 76.1"

Depth: 17"

For all dimensions please see the respective installation guide

Standard Features Includes:

- ❑ Soft close/anti slam drawers and doors
- ❑ Premium laminate fronts and doors
- ❑ Designer solid surface work surface w/ trash cutout
- ❑ Structural steel powder coated toekick
- ❑ Upper storage cabinets
- ❑ Modern style console
- ❑ Installed flush to wall



# ANTHOS LINEA SIDE TREATMENT CONSOLE

Vendor Item #: ALSTC 03H-000-U35

PDCP SAP #: 510080810

Description: Side TX Console, Right Trash  
Opening, Upper Storage Cab.

MSRP: \$7,925

Console Dimensions:

Width: 55.9"

Height: 76.1"

Depth: 17"

For all dimensions please see the respective installation guide

Standard Features Includes:

- ❑ Soft close/anti slam drawers and doors
- ❑ Premium laminate fronts and doors
- ❑ Designer solid surface work surface w/ trash cutout
- ❑ Structural steel powder coated toekick
- ❑ Upper storage cabinets
- ❑ Modern style console
- ❑ Installed flush to wall



# ANTHOS LINEA SIDE TREATMENT CONSOLE

Vendor Item #: ALSTC 03I-000-U00

PDCP SAP #: 510080789

Description: Side TX Console, Left Sink and Right  
Trash Opening, No Upper Cab.

MSRP: \$4,495

Console Dimensions:

Width: 29"

Height: 32.5"

Depth: 17"

For all dimensions please see the respective installation guide

Standard Features Includes:

- ❑ Undermount sink with manual faucet and soap dispenser
- ❑ Soft close/anti slam doors
- ❑ Premium laminate fronts and doors
- ❑ Designer solid surface work surface w/ trash cutout
- ❑ Structural steel powder coated toe kick
- ❑ Modern style console
- ❑ Installed flush to wall



# ANTHOS LINEA SIDE TREATMENT CONSOLE

Vendor Item #: ALSTC 03I-000-U31

PDCP SAP #: 510080740

Description: Side TX Console, Left Sink and Right  
Trash Opening, Upper Dispensing Cab.

MSRP: \$5,805

Console Dimensions:

Width: 29"

Height: 76.1"

Depth: 17"

For all dimensions please see the respective installation guide

Standard Features Includes:

- ☒ Undermount sink with manual faucet and soap dispenser
- ☒ Soft close/anti slam doors
- ☒ Premium laminate fronts and doors
- ☒ Designer solid surface work surface w/ trash cutout
- ☒ Structural steel powder coated toekick
- ☒ Above sink dispensing for gloves and towels
- ☒ Upper storage cabinets
- ☒ Modern style console
- ☒ Installed flush to wall



# ANTHOS LINEA SIDE TREATMENT CONSOLE

Vendor Item #: ALSTC 03J-000-U00

PDCP SAP #: 510080817

Description: Side TX Console, Right Sink and Left  
Trash Opening, No Upper Cab.

MSRP: \$4,495

Console Dimensions:

Width: 29"

Height: 32.5"

Depth: 17"

For all dimensions please see the respective installation guide

Standard Features Includes:

- ✘ Undermount sink with manual faucet and soap dispenser
- ✘ Soft close/anti slam doors
- ✘ Premium laminate fronts and doors
- ✘ Designer solid surface work surface w/ trash cutout
- ✘ Structural steel powder coated toekick
- ✘ Modern style console
- ✘ Installed flush to wall



# ANTHOS LINEA SIDE TREATMENT CONSOLE

Vendor Item #: ALSTC 03J-000-U31

PDCP SAP #: 510080719

Description: Side TX Console, Right Sink and Left  
Trash Opening, Upper Dispensing Cab.

MSRP: \$5,805

Console Dimensions:

Width: 29"

Height: 76.1"

Depth: 17"

For all dimensions please see the respective installation guide

Standard Features Includes:

- ❑ Undermount sink with manual faucet and soap dispenser
- ❑ Soft close/anti slam doors
- ❑ Premium laminate fronts and doors
- ❑ Designer solid surface work surface w/ trash cutout
- ❑ Structural steel powder coated toekick
- ❑ Above sink dispensing for gloves and towels
- ❑ Upper storage cabinets
- ❑ Modern style console
- ❑ Installed flush to wall



# ANTHOS LINEA SIDE TREATMENT CONSOLE

Vendor Item #: ALSTC 03K-000-U00

PDCP SAP #: 510080593

Description: Side TX Console, Left Sink and  
Trash Opening, No Upper Cab.

MSRP: \$8,190

Console Dimensions:

Width: 69.4"

Height: 32.5"

Depth: 17"

For all dimensions please see the respective installation guide

Standard Features Includes:

- ✘ Undermount sink with manual faucet and soap dispenser
- ✘ Soft close/anti slam drawers and doors
- ✘ Premium laminate fronts and doors
- ✘ Designer solid surface work surface w/ trash cutout
- ✘ Structural steel powder coated toekick
- ✘ Modern style console
- ✘ Installed flush to wall



# ANTHOS LINEA SIDE TREATMENT CONSOLE

Vendor Item #: ALSTC 03K-000-U31

PDCP SAP #: 510080691

Description: Side TX Console, Left Sink and Trash  
Opening, Upper Dispensing Cab.

MSRP: \$9,500

Console Dimensions:

Width: 69.4"

Height: 76.1"

Depth: 17"

For all dimensions please see the respective installation guide

Standard Features Includes:

- ▣ Undermount sink with manual faucet and soap dispenser
- ▣ Soft close/anti slam drawers and doors
- ▣ Premium laminate fronts and doors
- ▣ Designer solid surface work surface w/ trash cutout
- ▣ Structural steel powder coated toekick
- ▣ Above sink dispensing for gloves and towels
- ▣ Upper storage cabinets
- ▣ Modern style console
- ▣ Installed flush to wall



# ANTHOS LINEA SIDE TREATMENT CONSOLE

Vendor Item #: ALSTC 03K-000-U32

PDCP SAP #: 510080831

Description: Side TX Console, Left Sink and Trash  
Opening, Upper Storage Cab.

MSRP: \$9,500

Console Dimensions:

Width: 69.4"

Height: 76.1"

Depth: 17"

For all dimensions please see the respective installation guide

Standard Features Includes:

- ❑ Undermount sink with manual faucet and soap dispenser
- ❑ Soft close/anti slam drawers and doors
- ❑ Premium laminate fronts and doors
- ❑ Designer solid surface work surface w/ trash cutout
- ❑ Structural steel powder coated toekick
- ❑ Upper storage cabinets
- ❑ Modern style console
- ❑ Installed flush to wall



# ANTHOS LINEA SIDE TREATMENT CONSOLE

Vendor Item #: ALSTC 03K-000-U35

PDCP SAP #: 510080544

Description: Side TX Console, Left Sink and Trash  
Opening, Upper Storage Cab.

MSRP: \$10,340

Console Dimensions:

Width: 69.4"

Height: 76.1"

Depth: 17"

For all dimensions please see the respective installation guide

Standard Features Includes:

- ✘ Undermount sink with manual faucet and soap dispenser
- ✘ Soft close/anti slam drawers and doors
- ✘ Premium laminate fronts and doors
- ✘ Designer solid surface work surface w/ trash cutout
- ✘ Structural steel powder coated toekick
- ✘ Upper storage cabinets
- ✘ Modern style console
- ✘ Installed flush to wall



# ANTHOS LINEA SIDE TREATMENT CONSOLE

Vendor Item #: ALSTC 03K-000-U37

PDCP SAP #: 510080614

Description: Side TX Console, Left Sink and Trash Opening,  
Upper Storage and Dispensing Cab.

MSRP: \$11,650

Console Dimensions:

Width: 69.4"

Height: 76.1"

Depth: 17"

For all dimensions please see the respective installation guide

Standard Features Includes:

- ❑ Undermount sink with manual faucet and soap dispenser
- ❑ Soft close/anti slam drawers and doors
- ❑ Premium laminate fronts and doors
- ❑ Designer solid surface work surface w/ trash cutout
- ❑ Structural steel powder coated toekick
- ❑ Above sink dispensing for gloves and towels
- ❑ Upper storage cabinets
- ❑ Modern style console
- ❑ Installed flush to wall



# ANTHOS LINEA SIDE TREATMENT CONSOLE

Vendor Item #: ALSTC 03K-000-U39

PDCP SAP #: 510079816

Description: Side TX Console, Left Sink and Trash Opening,  
Upper Storage Cab.

MSRP: \$11,650

Console Dimensions:

Width: 69.4"

Height: 76.1"

Depth: 17"

For all dimensions please see the respective installation guide

Standard Features Includes:

- ❑ Undermount sink with manual faucet and soap dispenser
- ❑ Soft close/anti slam drawers and doors
- ❑ Premium laminate fronts and doors
- ❑ Designer solid surface work surface w/ trash cutout
- ❑ Structural steel powder coated toekick
- ❑ Upper storage cabinets
- ❑ Modern style console
- ❑ Installed flush to wall



# ANTHOS LINEA SIDE TREATMENT CONSOLE

Vendor Item #: ALSTC 03L-000-U00

PDCP SAP #: 510079599

Description: Side TX Console, Right Sink and  
Trash Opening, No Upper Cab.

MSRP: \$8,190

Console Dimensions:

Width: 69.4"

Height: 32.5"

Depth: 17"

For all dimensions please see the respective installation guide

Standard Features Includes:

- ❑ Undermount sink with manual faucet and soap dispenser
- ❑ Soft close/anti slam drawers and doors
- ❑ Premium laminate fronts and doors
- ❑ Designer solid surface work surface w/ trash cutout
- ❑ Structural steel powder coated toekick
- ❑ Modern style console
- ❑ Installed flush to wall



# ANTHOS LINEA SIDE TREATMENT CONSOLE

Vendor Item #: ALSTC 03L-000-U31

PDCP SAP #: 510079641

Description: Side TX Console, Right Sink and Trash  
Opening, Upper Dispensing Cab.

MSRP: \$9,500

Console Dimensions:

Width: 69.4"

Height: 76.1"

Depth: 17"

For all dimensions please see the respective installation guide

Standard Features Includes:

- ❑ Undermount sink with manual faucet and soap dispenser
- ❑ Soft close/anti slam drawers and doors
- ❑ Premium laminate fronts and doors
- ❑ Designer solid surface work surface w/ trash cutout
- ❑ Structural steel powder coated toekick
- ❑ Above sink dispensing for gloves and towels
- ❑ Upper storage cabinets
- ❑ Modern style console
- ❑ Installed flush to wall



# ANTHOS LINEA SIDE TREATMENT CONSOLE

Vendor Item #: ALSTC 03L-000-U32

PDCP SAP #: 510079648

Description: Side TX Console, Right Sink and  
Trash Opening, Upper Storage Cab.

MSRP: \$9,500

Console Dimensions:

Width: 69.4"

Height: 76.1"

Depth: 17"

For all dimensions please see the respective installation guide

Standard Features Includes:

- ❑ Undermount sink with manual faucet and soap dispenser
- ❑ Soft close/anti slam drawers and doors
- ❑ Premium laminate fronts and doors
- ❑ Designer solid surface work surface w/ trash cutout
- ❑ Structural steel powder coated toekick
- ❑ Upper storage cabinets
- ❑ Modern style console
- ❑ Installed flush to wall



# ANTHOS LINEA SIDE TREATMENT CONSOLE

Vendor Item #: ALSTC 03L-000-U35

PDCP SAP #: 510079767

Description: Side TX Console, Right Sink and  
Trash Opening, Upper Storage Cab.

MSRP: \$10,340

Console Dimensions:

Width: 69.4"

Height: 76.1"

Depth: 17"

For all dimensions please see the respective installation guide

Standard Features Includes:

- ☒ Undermount sink with manual faucet and soap dispenser
- ☒ Soft close/anti slam drawers and doors
- ☒ Premium laminate fronts and doors
- ☒ Designer solid surface work surface w/ trash cutout
- ☒ Structural steel powder coated toekick
- ☒ Upper storage cabinets
- ☒ Modern style console
- ☒ Installed flush to wall



# ANTHOS LINEA SIDE TREATMENT CONSOLE

Vendor Item #: ALSTC 03L-000-U38

PDCP SAP #: 510080229

Description: Side TX Console, Right Sink and Trash  
Opening, Upper Storage and Dispensing Cab.

MSRP: \$11,650

Console Dimensions:

Width: 69.4"

Height: 76.1"

Depth: 17"

For all dimensions please see the respective installation guide

Standard Features Includes:

- ❑ Undermount sink with manual faucet and soap dispenser
- ❑ Soft close/anti slam drawers and doors
- ❑ Premium laminate fronts and doors
- ❑ Designer solid surface work surface w/ trash cutout
- ❑ Structural steel powder coated toekick
- ❑ Above sink dispensing for gloves and towels
- ❑ Upper storage cabinets
- ❑ Modern style console
- ❑ Installed flush to wall



# ANTHOS LINEA SIDE TREATMENT CONSOLE

Vendor Item #: ALSTC 03L-000-U39

PDCP SAP #: 510080236

Description: Side TX Console, Right Sink and Trash  
Opening, Upper Storage Cab.

MSRP: \$11,650

Console Dimensions:

Width: 69.4"

Height: 76.1"

Depth: 17"

For all dimensions please see the respective installation guide

Standard Features Includes:

- ✘ Undermount sink with manual faucet and soap dispenser
- ✘ Soft close/anti slam drawers and doors
- ✘ Premium laminate fronts and doors
- ✘ Designer solid surface work surface w/ trash cutout
- ✘ Structural steel powder coated toekick
- ✘ Upper storage cabinets
- ✘ Modern style console
- ✘ Installed flush to wall



# ANTHOS LINEA SIDE TREATMENT CONSOLE

Vendor Item #: ALSTC 03M-000-U00

PDCP SAP #: 510079592

Description: Side TX Console, Left Trash  
Opening, No Upper Cab.

MSRP: \$7,790

Console Dimensions:

Width: 69.4"

Height: 32.5"

Depth: 17"

For all dimensions please see the respective installation guide

Standard Features Includes:

- ❑ Soft close/anti slam drawers and doors
- ❑ Premium laminate fronts and doors
- ❑ Designer solid surface work surface w/ trash cutout
- ❑ Structural steel powder coated toekick
- ❑ Modern style console
- ❑ Installed flush to wall



# ANTHOS LINEA SIDE TREATMENT CONSOLE

Vendor Item #: ALSTC 03M-000-U31

PDCP SAP #: 510079620

Description: Side TX Console, Left Trash Opening,  
Upper Dispensing Cab.

MSRP: \$9,100

Console Dimensions:

Width: 69.4"

Height: 76.1"

Depth: 17"

For all dimensions please see the respective installation guide

Standard Features Includes:

- ✘ Soft close/anti slam drawers and doors
- ✘ Premium laminate fronts and doors
- ✘ Designer solid surface work surface w/ trash cutout
- ✘ Structural steel powder coated toekick
- ✘ Above trash dispensing for gloves and towels
- ✘ Upper storage cabinets
- ✘ Modern style console
- ✘ Installed flush to wall



# ANTHOS LINEA SIDE TREATMENT CONSOLE

Vendor Item #: ALSTC 03M-000-U32

PDCP SAP #: 510079606

Description: Side TX Console, Left Trash  
Opening, Upper Storage Cab.

MSRP: \$9,100

Console Dimensions:

Width: 69.4"

Height: 76.1"

Depth: 17"

For all dimensions please see the respective installation guide

Standard Features Includes:

- ❑ Soft close/anti slam drawers and doors
- ❑ Premium laminate fronts and doors
- ❑ Designer solid surface work surface w/ trash cutout
- ❑ Structural steel powder coated toekick
- ❑ Upper storage cabinets
- ❑ Modern style console
- ❑ Installed flush to wall



# ANTHOS LINEA SIDE TREATMENT CONSOLE

Vendor Item #: ALSTC 03M-000-U35

PDCP SAP #: 510079760

Description: Side TX Console, Left Trash  
Opening, Upper Storage Cab.

MSRP: \$9,940

Console Dimensions:

Width: 69.4"

Height: 76.1"

Depth: 17"

For all dimensions please see the respective installation guide

Standard Features Includes:

- ☒ Soft close/anti slam drawers and doors
- ☒ Premium laminate fronts and doors
- ☒ Designer solid surface work surface w/ trash cutout
- ☒ Structural steel powder coated toekick
- ☒ Upper storage cabinets
- ☒ Modern style console
- ☒ Installed flush to wall



# ANTHOS LINEA SIDE TREATMENT CONSOLE

Vendor Item #: ALSTC 03M-000-U37

PDCP SAP #: 510079781

Description: Side TX Console, Left Trash Opening, Upper Storage and Dispensing Cab.

MSRP: \$11,250

Console Dimensions:

Width: 69.4"

Height: 76.1"

Depth: 17"

For all dimensions please see the respective installation guide

Standard Features Includes:

- ✘ Soft close/anti slam drawers and doors
- ✘ Premium laminate fronts and doors
- ✘ Designer solid surface work surface w/ trash cutout
- ✘ Structural steel powder coated toekick
- ✘ Above trash dispensing for gloves and towels
- ✘ Upper storage cabinets
- ✘ Modern style console
- ✘ Installed flush to wall



# ANTHOS LINEA SIDE TREATMENT CONSOLE

Vendor Item #: ALSTC 03M-000-U39

PDCP SAP #: 510079788

Description: Side TX Console, Left Trash Opening,  
Upper Storage Cab.

MSRP: \$11,250

Console Dimensions:

Width: 69.4"

Height: 76.1"

Depth: 17"

For all dimensions please see the respective installation guide

Standard Features Includes:

- ❑ Soft close/anti slam drawers and doors
- ❑ Premium laminate fronts and doors
- ❑ Designer solid surface work surface w/ trash cutout
- ❑ Structural steel powder coated toekick
- ❑ Upper storage cabinets
- ❑ Modern style console
- ❑ Installed flush to wall



# ANTHOS LINEA SIDE TREATMENT CONSOLE

Vendor Item #: ALSTC 03N-000-U00

PDCP SAP #: 510079585

Description: Side TX Console, Right Trash  
Opening, No Upper Cab.

MSRP: \$7,790

Console Dimensions:

Width: 69.4"

Height: 32.5"

Depth: 17"

For all dimensions please see the respective installation guide

Standard Features Includes:

- ❑ Soft close/anti slam drawers and doors
- ❑ Premium laminate fronts and doors
- ❑ Designer solid surface work surface w/ trash cutout
- ❑ Structural steel powder coated toekick
- ❑ Modern style console
- ❑ Installed flush to wall



# ANTHOS LINEA SIDE TREATMENT CONSOLE

Vendor Item #: ALSTC 03N-000-U31

PDCP SAP #: 510079613

Description: Side TX Console, Right Trash  
Opening, Upper Dispensing Cab.

MSRP: \$9,100

Console Dimensions:

Width: 69.4"

Height: 76.1"

Depth: 17"

For all dimensions please see the respective installation guide

Standard Features Includes:

- ❑ Soft close/anti slam drawers and doors
- ❑ Premium laminate fronts and doors
- ❑ Designer solid surface work surface w/ trash cutout
- ❑ Structural steel powder coated toekick
- ❑ Above trash dispensing for gloves and towels
- ❑ Upper storage cabinets
- ❑ Modern style console
- ❑ Installed flush to wall



# ANTHOS LINEA SIDE TREATMENT CONSOLE

Vendor Item #: ALSTC 03N-000-U32

PDCP SAP #: 510079627

Description: Side TX Console, Right Trash  
Opening, Upper Storage Cab.

MSRP: \$9,100

Console Dimensions:

Width: 69.4"

Height: 76.1"

Depth: 17"

For all dimensions please see the respective installation guide

Standard Features Includes:

- ❑ Soft close/anti slam drawers and doors
- ❑ Premium laminate fronts and doors
- ❑ Designer solid surface work surface w/ trash cutout
- ❑ Structural steel powder coated toekick
- ❑ Upper storage cabinets
- ❑ Modern style console
- ❑ Installed flush to wall



# ANTHOS LINEA SIDE TREATMENT CONSOLE

Vendor Item #: ALSTC 03N-000-U35

PDCP SAP #: 510079753

Description: Side TX Console, Right Trash  
Opening, Upper Storage Cab.

MSRP: \$9940

Console Dimensions:

Width: 69.4"

Height: 76.1"

Depth: 17"

For all dimensions please see the respective installation guide

Standard Features Includes:

- ❑ Soft close/anti slam drawers and doors
- ❑ Premium laminate fronts and doors
- ❑ Designer solid surface work surface w/ trash cutout
- ❑ Structural steel powder coated toekick
- ❑ Upper storage cabinets
- ❑ Modern style console
- ❑ Installed flush to wall



# ANTHOS LINEA SIDE TREATMENT CONSOLE

Vendor Item #: ALSTC 03N-000-U38

PDCP SAP #: 510079795

Description: Side TX Console, Right Trash Opening,  
Upper Storage and Dispensing Cab.

MSRP: \$11,250

Console Dimensions:

Width: 69.4"

Height: 76.1"

Depth: 17"

For all dimensions please see the respective installation guide

Standard Features Includes:

- ❑ Soft close/anti slam drawers and doors
- ❑ Premium laminate fronts and doors
- ❑ Designer solid surface work surface w/ trash cutout
- ❑ Structural steel powder coated toekick
- ❑ Above trash dispensing for gloves and towels
- ❑ Upper storage cabinets
- ❑ Modern style console
- ❑ Installed flush to wall



# ANTHOS LINEA SIDE TREATMENT CONSOLE

Vendor Item #: ALSTC 03N-000-U39

PDCP SAP #: 510079802

Description: Side TX Console, Right Trash  
Opening, Upper Storage Cab.

MSRP: \$11,250

Console Dimensions:

Width: 69.4"

Height: 76.1"

Depth: 17"

For all dimensions please see the respective installation guide

Standard Features Includes:

- ❑ Soft close/anti slam drawers and doors
- ❑ Premium laminate fronts and doors
- ❑ Designer solid surface work surface w/ trash cutout
- ❑ Structural steel powder coated toekick
- ❑ Upper storage cabinets
- ❑ Modern style console
- ❑ Installed flush to wall



# Additional Options

## Remove Trash Cutout



Vendor Item # 101

PDDC SAP # 101707833

Description Remove the existing trash cut-out from the work surface, restoring the countertop to a smooth, uninterrupted finish for a cleaner look and increased usable workspace.

MSRP \$0

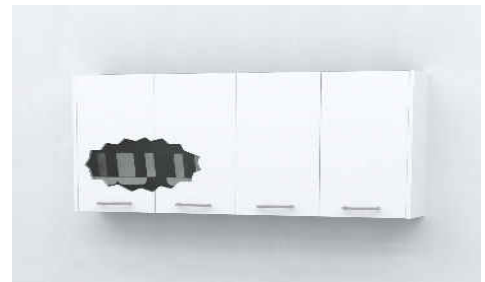
Vendor Item # 102

PDDC SAP # 101707833

Description Hide the PPE storage by removing the door hardware and adding a new glovebox return to the upper cabinets, ensuring a seamless appearance while maintaining secure, concealed PPE storage.

MSRP \$0

## Concealed PPE



## Touchless Faucet



Vendor Item # 103

PDDC SAP # 510080446

Description Swap the existing manual faucet with a touchless faucet for hands-free operation, improving hygiene and convenience in the workspace, ideal for high-use environments.

MSRP \$1000

Vendor Item # 104

PDDC SAP # 510080250

Description Remove the standard PPE door and install a decorative metal PPE door on the upper cabinets, providing a durable, stylish storage solution for protective equipment with enhanced longevity.

MSRP \$150

## Metal PPE



## Handle Swap



Vendor Item # 105

PDDC SAP # 101707833

Description Replace the existing brushed nickel pulls with modern black pulls on all cabinet doors and drawers to create a cohesive, contemporary aesthetic.

MSRP \$0

# Additional Options

**Vendor Item #** 113

**PDDC SAP #** 101707833

**Description** Remove the sink, faucet, and mounting hardware from the cabinet to create a smooth countertop, perfect for repurposing the space for storage or a new workstation.

**MSRP** \$0

## Remove Sink & HDW



## Push Activated Trash



**Vendor Item #** 115

**PDDC SAP #** 510080453

**Description** Install a push-activated trash module in the cabinet, offering a hands-free waste disposal solution that enhances hygiene and convenience in high-traffic work environments.

**MSRP** \$600

**Vendor Item #** 117

**PDDC SAP #** 101707833

**Description** Add a slim single door and two adjustable shelves to the cabinet, optimizing storage in narrow spaces while providing easy access to smaller items through a compact, efficient design.

**MSRP** \$0

## Slim Door & Drawer



## Double 4 Drawer Bank - 03E & 03F ONLY



**Vendor Item #** 122

**PDDC SAP #** 510080467

**Description** Add two banks of four drawers each to the 66-inch console, totaling eight drawers for efficient storage and easy access to tools or supplies in a compact layout.

**MSRP** \$950

# ANTHOS LINEA CENTER TREATMENT CONSOLE

Vendor Item #: ALCTC B5A-000-000

PDCP SAP #: 101707813

Description: Anthos Linea Central Treatment Console

MSRP: \$25,195

Console Dimensions:

Width: 24.0"

Height: 87.4"

Depth: 113.6"

For all dimensions please see the respective installation guide

Standard Features Includes:

- ☒ Structural steel powder coated base with built in levelers
- ☒ Installed free-standing
- ☒ Soft close drawers
- ☒ Soft close concealed hinge doors
- ☒ Premium laminate fronts and doors
- ☒ Designer solid surface work surface
- ☒ Fully chaised for equipment integration
- ☒ Undermount stainless steel sink with faucet and soap dispenser
- ☒ Above sink dispensing for gloves and towels
- ☒ X-Ray Pass-through consoles with hi-grade bi-fold doors



# ANTHOS LINEA CENTER TREATMENT CONSOLE

Vendor Item #: ALCTC B5C-000-000

PDCP SAP #: 101707814

Description: Anthos Linea T-Wall Treatment Center

MSRP: \$7,870

Console Dimensions:

Width: 24.0"

Height: 87.4"

Depth: 32.2"

For all dimensions please see the respective installation guide

Standard Features Includes:

- ☒ Structural steel powder coated base with built in levelers
- ☒ Installed flush mount to wall
- ☒ Soft close concealed hinge doors
- ☒ Premium laminate fronts and doors
- ☒ Designer solid surface work surface
- ☒ Undermount stainless steel sink with faucet and soap dispenser
- ☒ Above sink dispensing for gloves and towels



# ANTHOS LINEA CENTER TREATMENT CONSOLE

Vendor Item #: ALCTC B5E-000-000

PDCP SAP #: 101707815

Description: Anthos Linea Wall Insert for  
Passthrough X-ray

MSRP: \$7,605

Console Dimensions:

Width: 55.5"

Height: 55.5"

Depth: 22.0"

For all dimensions please see the respective installation guide



# ANTHOS LINEA CENTER TREATMENT CONSOLE

Vendor Item #: ALCTC B5F-000-000

PDCP SAP #: 510080243

Description: Anthos Linea Wall Insert for  
Passthrough X-ray

MSRP: \$7,605

Console Dimensions:

Width: 24"

Height: 87.4"

Depth: 113.6"

For all dimensions please see the respective installation guide

Standard Features Includes:

- ❑ Structural steel powder coated base with built in levelers
- ❑ Installed free-standing
- ❑ Soft close drawers
- ❑ Soft close concealed hinge doors
- ❑ Premium laminate fronts and doors
- ❑ Designer solid surface work surface
- ❑ Fully chaised for equipment integration
- ❑ Above dispensing for gloves and towels
- ❑ X-Ray Pass-through consoles with hi-grade bi-fold doors



# Additional Options

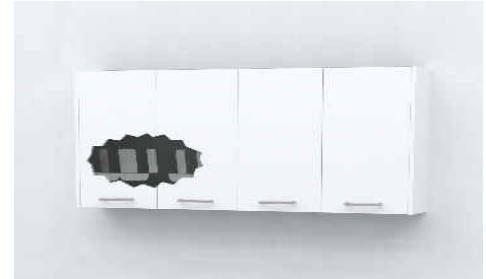
Vendor Item # 102

Concealed PPE

PDDC SAP # 101707833

Description Hide the PPE storage by removing the door hardware and adding a new glovebox return to the upper cabinets, ensuring a seamless appearance while maintaining secure, concealed PPE storage.

MSRP \$0



Touchless Faucet

Vendor Item # 103



PDDC SAP # 510080446

Description Swap the existing manual faucet with a touchless faucet for hands-free operation, improving hygiene and convenience in the workspace, ideal for high-use environments.

MSRP \$850

Vendor Item # 104

Metal PPE

PDDC SAP # 510080250

Description Remove the standard PPE door and install a decorative metal PPE door on the upper cabinets, providing a durable, stylish storage solution for protective equipment with enhanced longevity.

MSRP \$150



Handle Swap

Vendor Item # 105



PDDC SAP # 101707833

Description Replace the existing brushed nickel pulls with modern black pulls on all cabinet doors and drawers to create a cohesive, contemporary aesthetic.

MSRP \$0

Vendor Item # 113

Remove Sink & HDW

PDDC SAP # 101707833

Description Remove the sink, faucet, and mounting hardware from the cabinet to create a smooth countertop, perfect for repurposing the space for storage or a new workstation.

MSRP \$0



# ANTHOS LINEA STERILIZATION CENTER

Vendor Item #: ALSTR-06A-000-000

PDCP SAP #: 101707816

Description: Anthos Linea 8' Sterilization Center

MSRP: \$17,199

Console Dimensions:

Width: 97.25"

Height: 90.0"

Depth: 24.15"

For all dimensions please see the respective installation guide

Standard Features Includes:

- ✘ Structural steel powder coated base with levelers
- ✘ Decorative brushed nickel bar pulls
- ✘ Soft close steel drawers
- ✘ Soft close concealed hinge doors
- ✘ Designer solid surface counter tops
- ✘ Undermount stainless steel sink with faucet
- ✘ Premium laminate fronts and accents
- ✘ Dispensing for gloves and towels from upper cabinet
- ✘ Dual pull out solid surface autoclave shelves



# ANTHOS LINEA STERILIZATION CENTER

Vendor Item #: ALSTR 06B-000-000

PDCP SAP #: 101707817

Description: Anthos Linea 10' Sterilization Center

MSRP: \$20,599

Console Dimensions:

Width: 121.25"

Height: 90.0"

Depth: 24.15"

For all dimensions please see the respective installation guide

Standard Features Includes:

- ▣ Structural steel powder coated base with levelers
- ▣ Decorative brushed nickel bar pulls
- ▣ Soft close steel drawers
- ▣ Soft close concealed hinge doors
- ▣ One inch thick designer solid surface counter tops
- ▣ Undermount stainless steel sink with faucet
- ▣ Premium laminate fronts and accents
- ▣ Dispensing for gloves and towels from upper cabinet
- ▣ Dual through counter waste locations with work shelf
- ▣ Dual pull out solid surface autoclave shelves



# ANTHOS LINEA STERILIZATION CENTER

Vendor Item #: ALSTR 06D-000-000

PDCP SAP #: 101707818

Description: Anthos Linea 12' Sterilization Center

MSRP: \$25,399

Console Dimensions:

Width: 145.25"

Height: 90.0"

Depth: 24.15"

For all dimensions please see the respective installation guide

Standard Features Includes:

- ✘ Structural steel powder coated base with levelers
- ✘ Decorative brushed nickel bar pulls
- ✘ Soft close steel drawers
- ✘ Soft close concealed hinge doors
- ✘ One inch thick designer solid surface counter tops
- ✘ Undermount stainless steel sink with faucet
- ✘ Premium laminate fronts and accents
- ✘ Dispensing for gloves and towels from upper cabinet
- ✘ Dual through counter waste locations with work shelf
- ✘ Quad pull out solid surface autoclave shelves



# Additional Options

## Remove Trash Cutout



Vendor Item # 101

PDDC SAP # 101707833

Description Remove the existing trash cut-out from the work surface, restoring the countertop to a smooth, uninterrupted finish for a cleaner look and increased usable workspace.

MSRP \$0

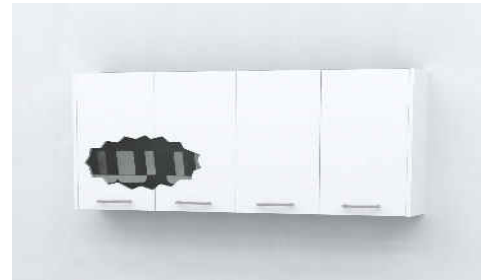
Vendor Item # 102

PDDC SAP # 101707833

Description Hide the PPE storage by removing the door hardware and adding a new glovebox return to the upper cabinets, ensuring a seamless appearance while maintaining secure, concealed PPE storage.

MSRP \$0

## Concealed PPE



## Touchless Faucet



Vendor Item # 103

PDDC SAP # 510080446

Description Swap the existing manual faucet with a touchless faucet for hands-free operation, improving hygiene and convenience in the workspace, ideal for high-use environments.

MSRP \$1000

Vendor Item # 104

PDDC SAP # 510080250

Description Remove the standard PPE door and install a decorative metal PPE door on the upper cabinets, providing a durable, stylish storage solution for protective equipment with enhanced longevity.

MSRP \$150

## Metal PPE



Vendor Item # 105

PDDC SAP # 101707833

Description Replace the existing brushed nickel pulls with modern black pulls on all cabinet doors and drawers to create a cohesive, contemporary aesthetic.

MSRP \$0

## Handle Swap



# Additional Options

## Remove Sink & HDW

**Vendor Item #** 113

**PDDC SAP #** 101707833

**Description** Remove the sink, faucet, and mounting hardware from the cabinet to create a smooth countertop, perfect for repurposing the space for storage or a new workstation.

**MSRP** \$0



## Push Activated Trash



**Vendor Item #** 115

**PDDC SAP #** 510080453

**Description** Install a push-activated trash module in the cabinet, offering a hands-free waste disposal solution that enhances hygiene and convenience in high-traffic work environments.

**MSRP** \$600

**Vendor Item #** 117

**PDDC SAP #** 101707833

**Description** Add a slim single door and two adjustable shelves to the cabinet, optimizing storage in narrow spaces while providing easy access to smaller items through a compact, efficient design.

**MSRP** \$0

## Slim Door & Drawer



## 5 Drawer



**Vendor Item #** 123

**PDDC SAP #** 510080481

**Description** Replace the 4-drawer bank with a 5-drawer bank (wrapping) for added storage and better organization of tools or supplies.

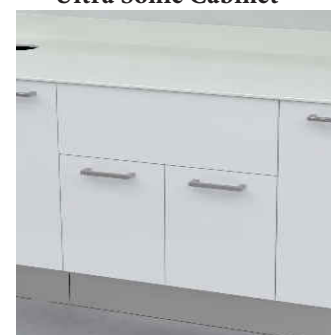
**MSRP** \$350

**Vendor Item #** 124

**PDDC SAP #** 510080264

**Description** Replace the closed storage base cabinet with an ultra-sonic base cabinet, designed for ultra-sonic equipment with seamless integration.

## Ultra Sonic Cabinet



**MSRP** \$150

# Additional Options

---

## Red Plexiglass Inserts



Vendor Item # 125

PDDC SAP # 510080488

Description Add red plexiglass inserts to the cabinet doors, indicating storage for dirty items, enhancing organization and visibility in the workspace while maintaining durability and functionality for upper cabinet storage.

MSRP \$1500

## Blue Plexiglass Inserts

Vendor Item # 126

PDDC SAP # 510080495

Description Add blue plexiglass inserts to the cabinet doors, designating storage for clean items, improving organization and visibility in the upper cabinets with a durable, modern finish.

MSRP \$1500



# BASE OPTIONS

## Textured



Printed image will vary from actual product physical samples are available from your Anthos rep

## Non-Textured



Printed image will vary from actual product physical samples are available from your Anthos rep

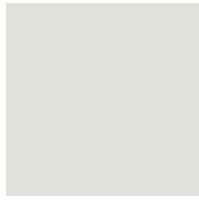


# WORKSURFACE OPTIONS

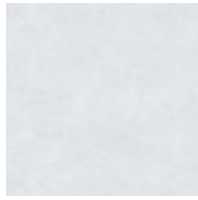
---



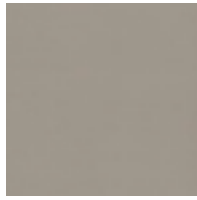
Designer White  
354



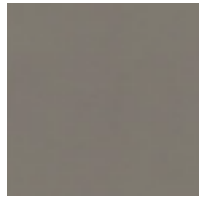
Relaxed White  
924



Powder White  
920



Metro Concrete  
929



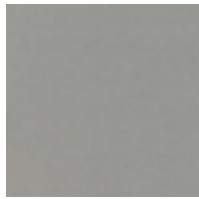
Mink Concrete  
928



Black Onyx Mirage  
909



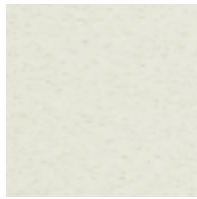
Milk Glass Spectra  
907



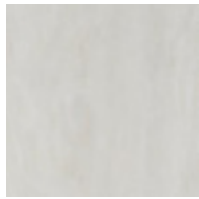
Zen Grey  
911



Yukon Riverstone  
919



Chilled Earth  
922



Beige Travertine\*  
926



Angel Falls\*  
923

Printed image will vary from actual product Physical samples are available from your Anthos rep  
**\*Additional charges will apply**



# TERMS AND CONDITIONS

---

## TERMS

NOVA Solutions' (NOVA) standard terms are net 45 days from Patterson Dental with approved credit. All prices are in U.S. Dollars. Prices herein are list prices effective with the date printed on the cover and supersede all other published price lists. NOVA reserves the right to change prices without prior notice.

## SELLING INFORMATION

Distribution of this price list does not in itself constitute an offer to sell. Offers can be received only from authorized NOVA dealers.

## PRICES

All prices listed are suggested retail prices, FOB point of shipment, freight allowed (included in list prices) when shipping within the continental United States. Orders are accepted subject to prices and taxes prevailing at the time of shipment. Prices and taxes are subject to change without notice. If shipping date requested is more than 90 days from date of order, NOVA shall have the right to use the published list prices effective at time of shipment.

## ORDER PLACEMENT

NOVA requires that all orders be in writing and accompanied by a layout/drawing. This is to ensure that orders are complete, avoid errors, and avoid duplication. Please order products by model numbers specified to avoid any possible error. Telephone orders will not be processed for production without proper written confirmation. NOVA cannot be held responsible for errors, omissions, and order duplication due to non-compliance with this procedure.

## ORDERING INFORMATION

Mail, fax or e-mail all orders to:

NOVA Solutions, Inc.  
421 Industrial Avenue  
P.O. Box 725  
Effingham, Illinois 62401  
Phone: 217-342-7070  
Phone: 800-730-6682  
Fax: 217-342-7006  
Fax: 800-940-6682  
E-mail: [orders@novasolutionsinc.com](mailto:orders@novasolutionsinc.com)

For prompt delivery, all orders must include:

- 1) Purchase order number
- 2) Attached layout/drawing
- 3) Billing address
- 4) Ship-to information and e-mail address
- 5) Special handling instructions
- 6) Complete model and finish number
- 7) Correct pricing
- 8) CPU / Monitor Dimensions (Where Applicable)

## ORDER ACKNOWLEDGMENT

Please notify NOVA immediately of any discrepancies in your order acknowledgement. The customer assumes all responsibility for order accuracy. NOVA does not assume responsibility for errors caused by miscommunications from the customer. Orders are accepted only by issuance of NOVA's formal acknowledgement. Orders are subject to the terms and conditions set forth herein, notwithstanding any variance in terms and conditions set forth on buyer's order forms.

The order acknowledgement is the final confirmation of the agreement between the customer and NOVA and supersedes all prior oral and written statements regarding the order. Once the order confirmation has been sent, only NOVA approved and signed modifications will supersede the original confirmation.

## QUOTATIONS

Quotations are valid for a period of thirty (30) days.

## CHANGES

NOVA reserves the right to make changes in design, specifications, construction, pricing or to discontinue products without prior notice. Weights and Dimensions are approximate and are within normal industry standards.

## ORDER CHANGES

Upon acknowledgement of an order, NOVA may not be able to accept a change order. NOVA will not accept changes on specials or custom items once production begins. Every attempt to make the requested change will be made and the following conditions apply:

- 1) Requested changes must be submitted in writing
- 2) Additional charges for materials, labor, and administrative costs may be charged
- 3) Completion dates may be rescheduled as required based on changes

## ORDER CANCELLATIONS

Order cancellations must be requested in writing no later than 48 hours after receipt of original order and are subject to approval of NOVA Solutions, Inc. Cancellations cannot be accepted otherwise.

## STORAGE

Orders in which shipment is delayed by the customer beyond 30 days after acknowledged shipping date are subject to a 3% weekly storage fee. Such transfer to storage will be deemed delivery to purchaser for all purposes including invoicing and payment. Customer must provide notification of "shipment delay" at least two weeks prior to the originally scheduled ship date.

## SHIPPING INFORMATION

Freight

All shipments are Free On Board (FOB) point of shipment, freight prepaid and allowed (included in list prices) when shipping within the continental United States. Please contact Customer Support for shipments to Alaska, Hawaii, and international. NOVA reserves the right to select the most appropriate carrier and routing on all shipments.

All shipments are to be coordinated & paid for by Patterson Dental, and to be picked up for delivery at Nova Solutions Inc. at 421 Industrial Ave. Effingham, IL 62401.

NOVA's product pricing is dock delivered, based on standard delivery between normal business hours Monday through Friday, excluding weekends and holidays. Any charge arising from failure to accept a shipment, rerouting while in transit, or carrier storage charges are not included in prices shown and will be billed to "Sold To" account number on the order. Detention charges will be incurred for untimely off-loading of product or other time delays incurred.



# TERMS AND CONDITIONS

---

## LOSS, DAMAGE OR DELAY

NOVA shall not be liable for loss, damage, or delay resulting from causes beyond its reasonable control, including but not limited to fire, strike, inclement weather, accidents, or delay in transportation. In the event of a delay, due to any such cause, the delivery date will be postponed.

## SHORTAGES

If the shipment is not delivered in accordance with the quantity of cartons and packages shown on the Bill of Lading and/or Freight Bill, do not accept it until such shortages are noted on both documents.

## FREIGHT CLAIMS

The merchandise is carefully packed and thoroughly inspected before shipment. The carrier upon acceptance of the shipment assumes responsibility for its safe delivery.

Signing the Bill of Lading as "Subject to Inspection" does not make the carrier liable for damage.

## CONCEALED LOSS OR DAMAGE

Concealed loss or damage means loss or damage that does not become apparent until the merchandise has been unpacked. The contents may be damaged in transit due to rough handling even though the carton may not show external damage. When damage is discovered upon unpacking, take pictures immediately and notify NOVA within 7 calendar days of the delivery date. NOVA will contact the carrier to initiate a claim.

## VISIBLE DAMAGE OR SHORTAGE

Any external evidence of damage or shortage must be noted on the freight bill or express receipts and signed by the carrier's agent. Failure to adequately describe such external evidence of damage or shortage may result in the carrier refusing to honor a damage claim. Take pictures of the damaged product and contact NOVA immediately to file a claim.

In the event of damage all cartons and packaging must be kept with the merchandise at the delivered location. Failure to do so constitutes acceptance and a waiver of any such claim.

## 5 YEAR LIMITED WARRANTY

NOVA Solutions warrants that its products are free from defects in materials and workmanship given normal use and care for the lifetime of service; proof of delivery being the only official document accepted by NOVA for any claim. In the event that a product is used more than normal use, the applicable warranty period may be reduced.

This warranty is made by NOVA Solutions to the original customer for as long as the original customer owns and uses the product. NOVA Solutions' warranty is only valid if the products are given normal and proper use, and installed in accordance with NOVA Solutions' installation and/or application guidelines, and installed by an authorized NOVA Solutions' dealer or agent. NOVA Solutions assumes no responsibility for repairs to products sustaining damages resulting from end-user modifications, attachments to a product, misuse, abuse, alteration, or negligence.

This warranty is subject to the limitations, exclusions, and other provisions provided below:

- Five years: Thermofused laminate
- Five years: Drawer slides
- Five years: Locks

As your manufacturer, NOVA Solutions stands behind our quality products and will do everything possible to resolve any problems that might arise within the terms of this warranty.

For more information, or to file a warranty claim, please contact NOVA Solutions' Customer Support at 800-730-6682.

## GOVERNING LAWS

This contract shall be construed and governed in accordance with the laws and regulations of the state of Illinois.



# ENVIROMENTAL ACCOUNTABILITY

---

NOVA Solutions takes our environmental accountability seriously with regards to our daily processes and products we produce. It is our corporate responsibility to our employees, customers, and community. We maintain the highest sensitivity and follow-through in preserving our natural resources today, and more importantly, for our future generations. We have chosen suppliers that share this same commitment. Particleboard, the foundation of our furniture design, is manufactured from 100% recycled postindustrial materials. We ensure it is low formaldehyde emission particleboard, use water-based adhesives that are non-toxic in lamination, and band any exposed edges to seal the substrate. To reduce materials in landfill sites, we integrate remaining cuttings into smaller products or packaging material. Our sawdust is recycled for use on local farms. We use recycled cardboard in all our packaging. NOVA also recycles cardboard, paper, plastics, steel, and aluminum.

